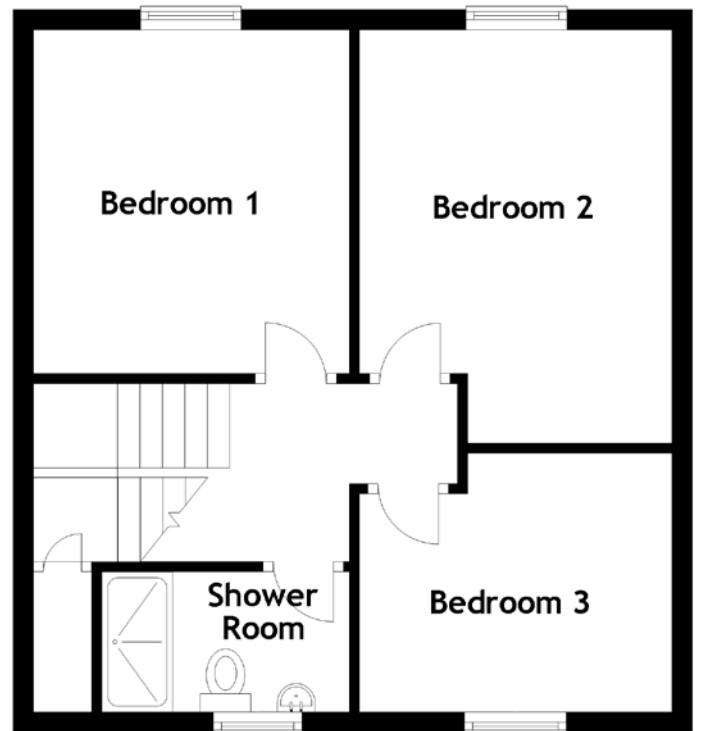
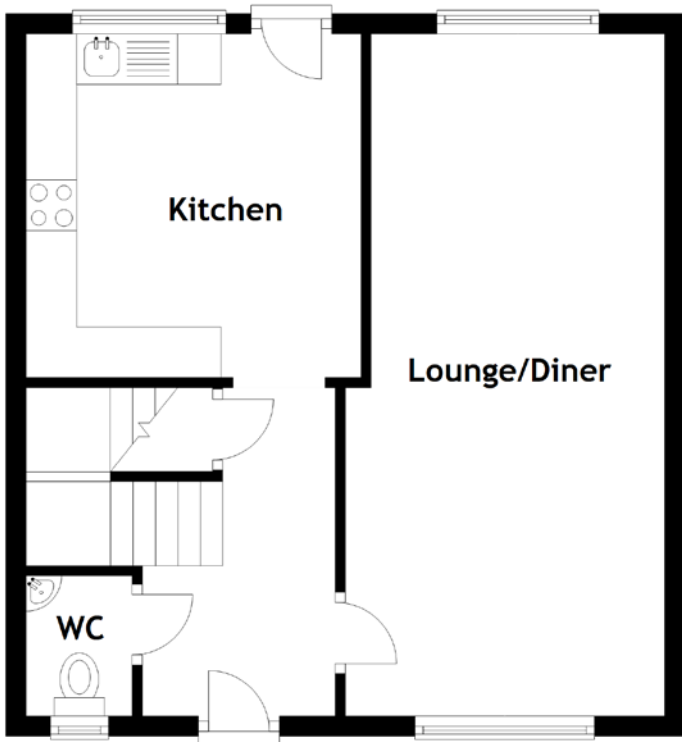


# FLOOR PLAN, DIMENSIONS & MAP



Approximate Dimensions (Taken from the widest point)

Lounge/Diner	6.75m (22'2") x 3.16m (10'4")
Kitchen	3.40m (11'2") x 3.20m (10'6")
WC	1.39m (4'7") x 1.05m (3'5")
Bedroom 1	3.45m (11'4") x 3.13m (10'3")

Bedroom 2	4.09m (13'5") x 3.18m (10'5")
Bedroom 3	3.18m (10'5") x 2.56m (8'5")
Shower Room	2.45m (8') x 1.39m (4'7")

Gross internal floor area (m<sup>2</sup>): 86m<sup>2</sup>  
EPC Rating: C

