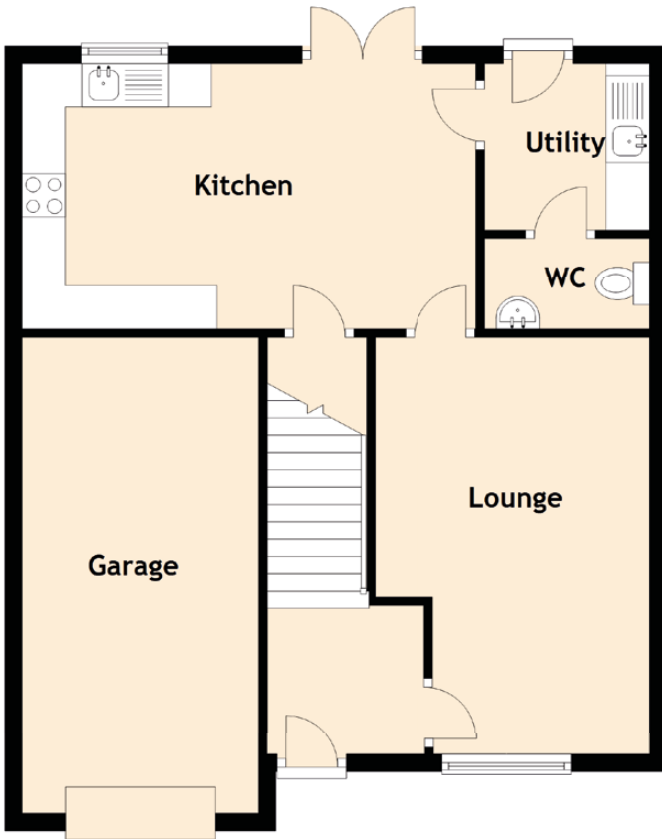


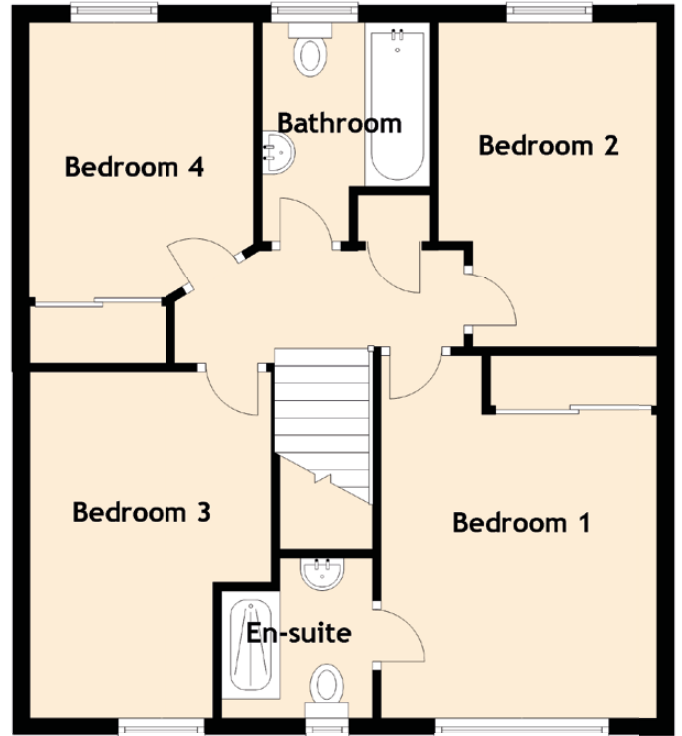
7 Middlebank Crescent

DUNFERMLINE, FIFE, KY11 8LS

Ground Floor



First Floor



Approximate Dimensions (Taken from the widest point)

Ground Floor

Lounge	4.82m (15'10") x 3.17m (10'5")
Kitchen	5.25m (17'3") x 3.07m (10'1")
Utility	1.92m (6'4") x 1.90m (6'3")
WC	1.90m (6'3") x 1.08m (3'7")
Garage	5.50m (18'1") x 2.73m (8'11")

First Floor

Bedroom 1	4.19m (13'9") x 3.19m (10'6")
En-suite	1.85m (6'1") x 1.74m (5'9")
Bedroom 2	3.75m (12'4") x 2.53m (8'4")
Bedroom 3	4.00m (13'1") x 2.92m (9'7")
Bedroom 4	3.38m (11'1") x 2.60m (8'6")
Bathroom	2.64m (8'8") x 1.93m (6'4")

Gross internal floor area (m2): 102m²