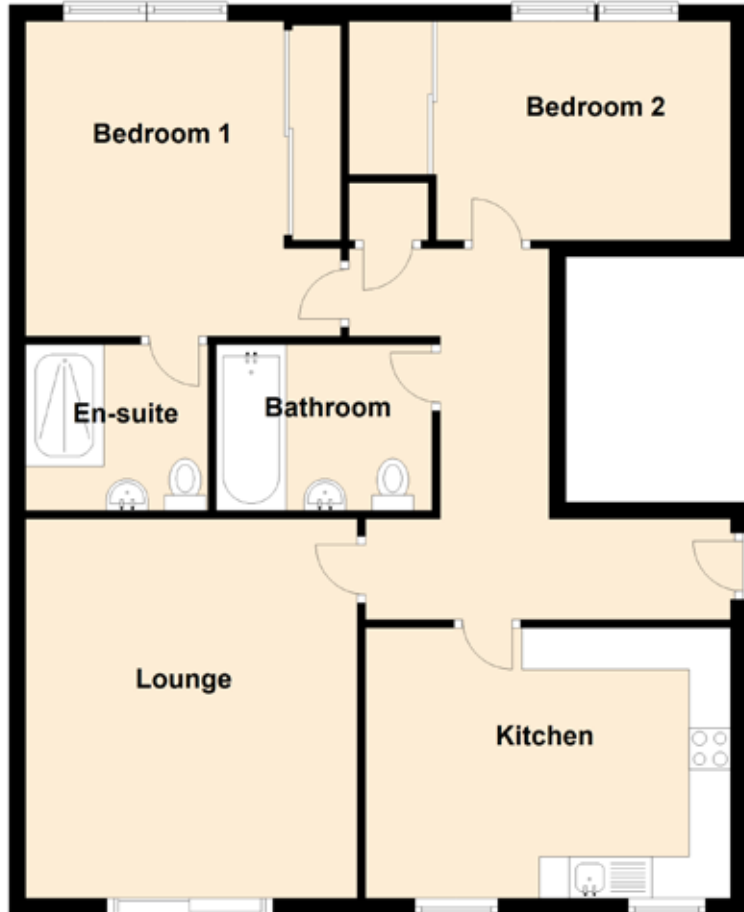


15 West Way

MUIR OF ORD, ROSS-SHIRE, HIGHLAND, IV6 7PD



Approximate Dimensions
(Taken from the widest point)

Lounge	4.90m (16'1") x 4.00m (13'1")
Kitchen	4.40m (14'5") x 2.90m (9'6")
Bedroom 1	3.80m (12'6") x 3.80m (12'6")
En-suite	2.20m (7'3") x 1.80m (5'11")
Bedroom 2	3.80m (12'6") x 2.90m (9'6")
Bathroom	2.60m (8'6") x 2.00m (6'7")