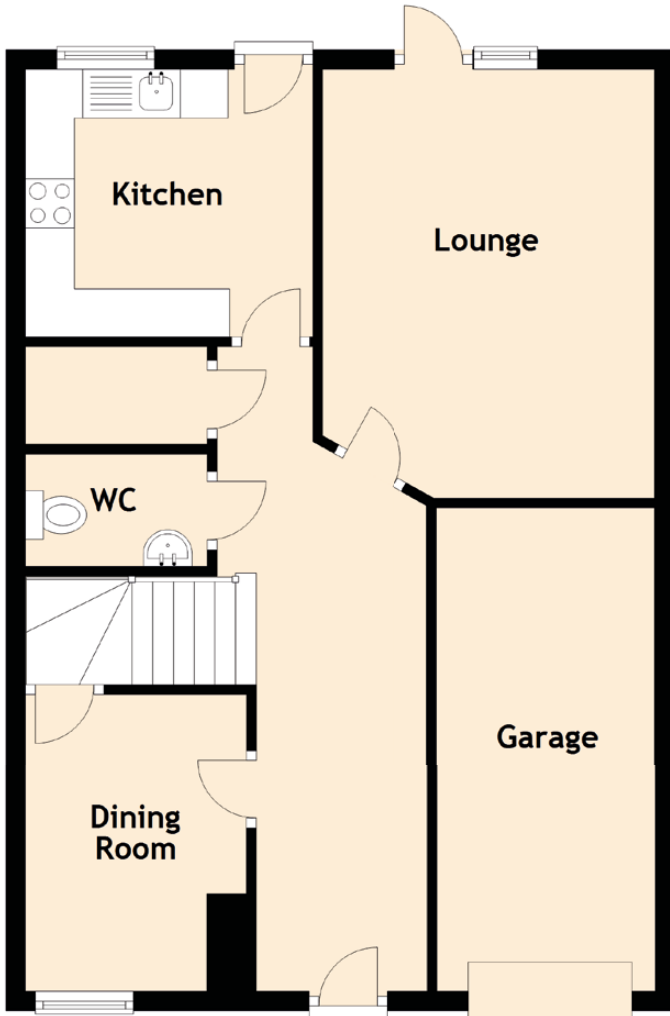


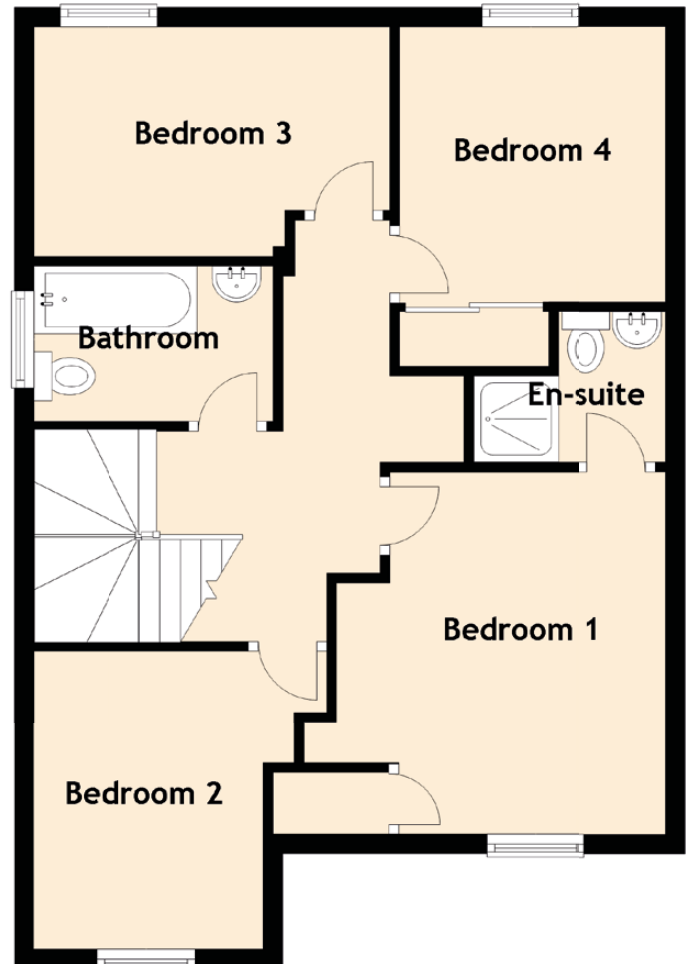
25 Auld Coal Bank

BONNYRIGG, MIDLOTHIAN, EH19 3JN

Ground Floor



First Floor



Approximate Dimensions (Taken from the widest point)

Lounge	4.40m (14'5") x 3.41m (11'2")
Kitchen	2.94m (9'8") x 2.75m (9')
Dining Room	3.05m (10') x 2.55m (8'4")
WC	1.86m (6'1") x 1.15m (3'9")
Bedroom 1	3.35m (11') x 2.74m (9')
En-suite	1.97m (6'6") x 1.66m (5'5")
Bedroom 2	3.06m (10') x 2.93m (9'7")
Bedroom 3	3.65m (12') x 2.35m (7'8")
Bedroom 4	3.21m (10'6") x 2.73m (8'11")
Bathroom	2.53m (8'4") x 1.60m (5'3")

Gross internal floor area (m²): 104m²