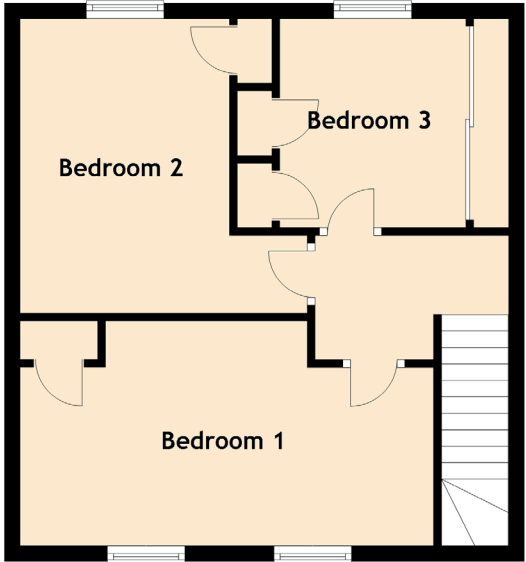
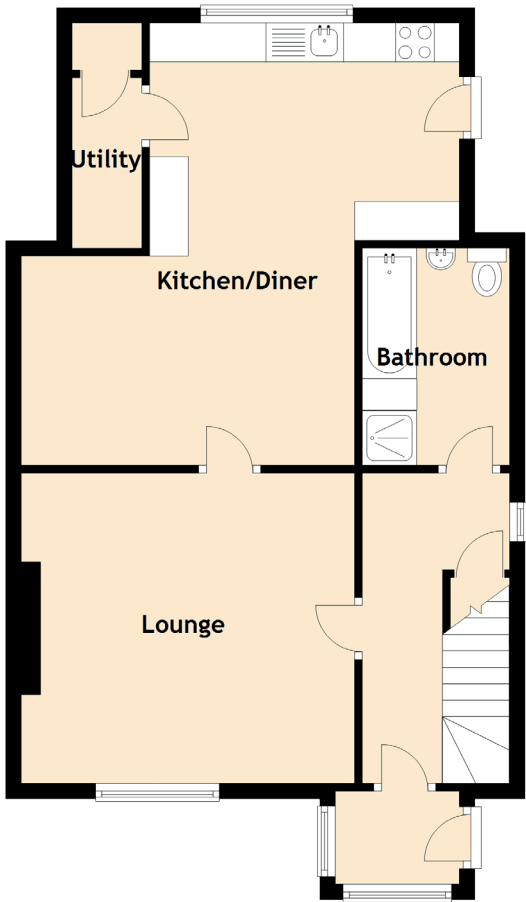


12 St Edmund Terrace

DUNDEE, ANGUS, DD3 9NQ



Approximate Dimensions (Taken from the widest point)

Lounge	4.30m (14'1") x 4.00m (13'1")
Kitchen/Diner	5.70m (18'8") x 4.30m (14'1")
Utility	2.20m (7'3") x 0.90m (2'11")
Bedroom 1	5.40m (17'9") x 2.90m (9'6")
Bedroom 2	3.90m (12'9") x 3.70m (12'2")
Bedroom 3	2.70m (8'10") x 2.40m (7'10")
Bathroom	2.80m (9'2") x 1.90m (6'3")