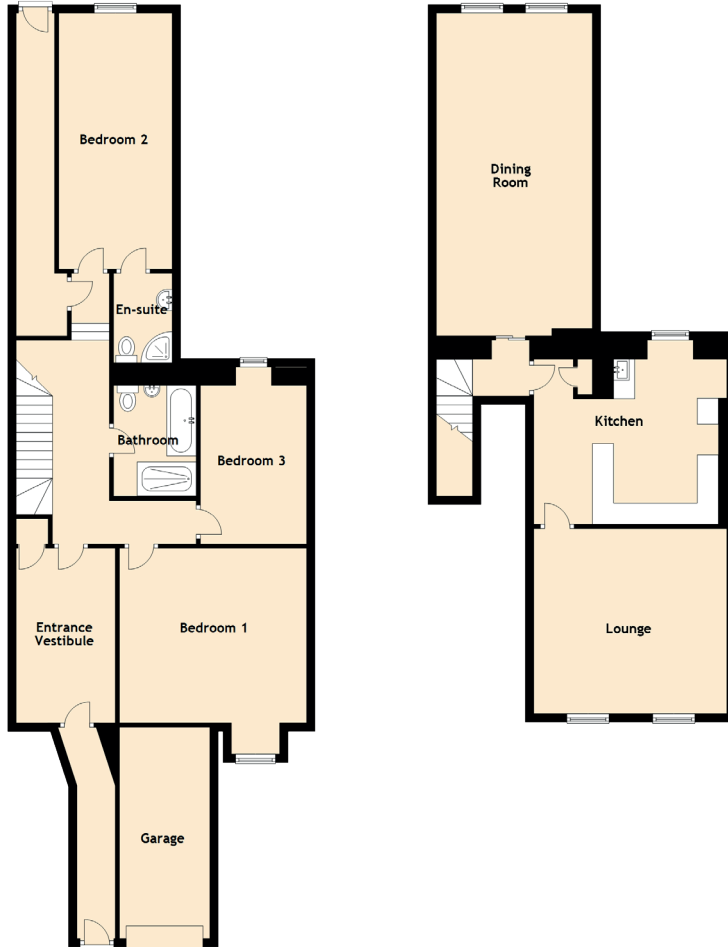


# 20 Pitkerro Road

DUNDEE, DD4 7DG



## Approximate Dimensions (Taken from the widest point)

### Ground Floor

Entrance Vestibule	4.20m (13'9") x 2.62m (8'7")
Bedroom 1	4.44m (14'7") x 4.15m (13'7")
Bedroom 2	6.08m (19'11") x 2.69m (8'10")
En-suite	1.63m (5'4") x 1.39m (4'7")
Bedroom 3	4.20m (13'9") x 2.52m (8'3")
Bathroom	2.64m (8'8") x 1.96m (6'5")
Garage	5.02m (16'6") x 2.14m (7')

### First Floor

Dining Room	7.67m (25'2") x 4.08m (13'5")
Kitchen	4.59m (15'1") x 4.37m (14'4")
Lounge	5.26m (17'3") x 4.40m (14'5")