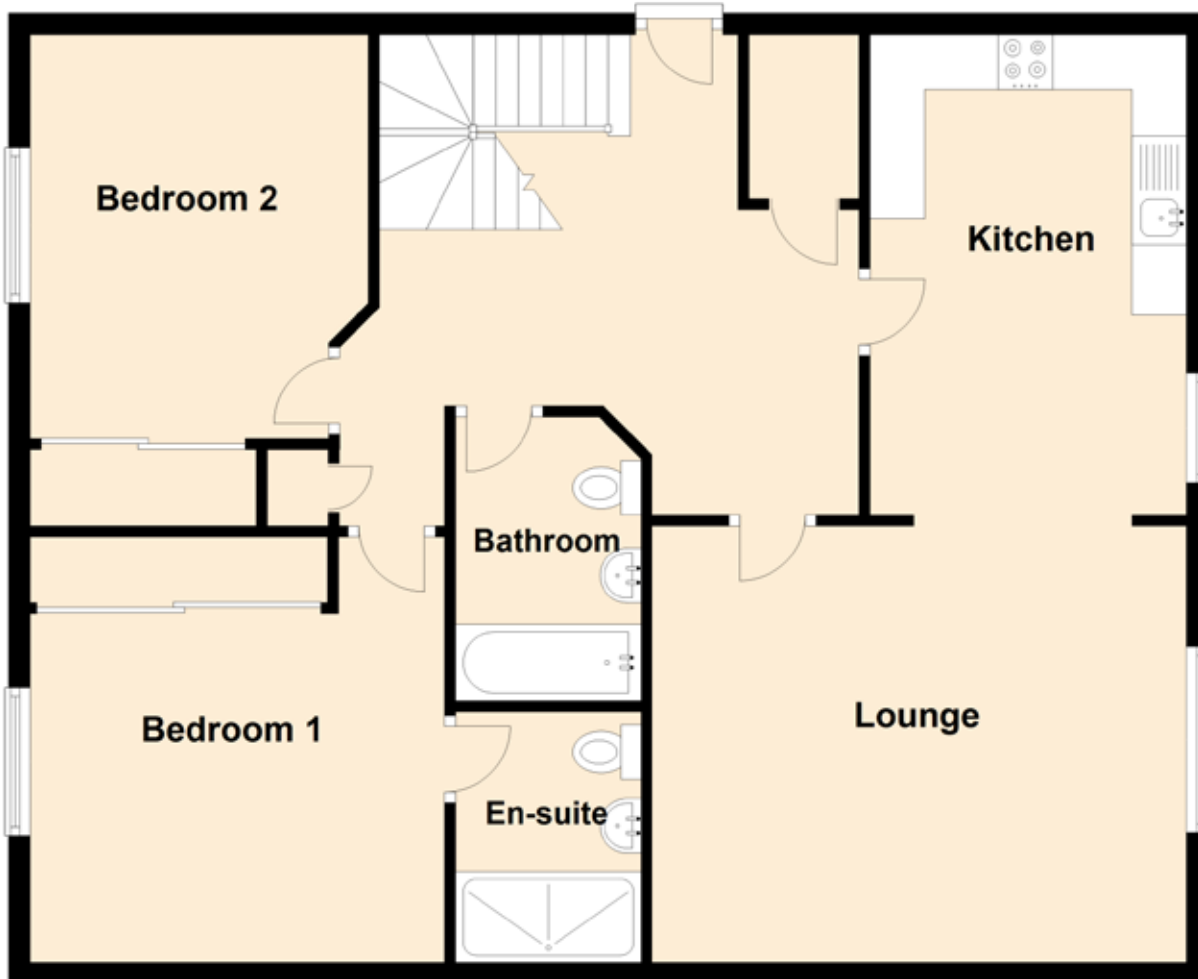


10 West Way

MUIR OF ORD, HIGHLAND, IV6 7PD



Approximate Dimensions

(Taken from the widest point)

Lounge	4.90m (16'1") x 4.00m (13'1")
Kitchen	4.40m (14'5") x 2.90m (9'6")
Bedroom 1	3.90m (12'10") x 3.80m (12'6")
En-suite	2.30m (7'7") x 1.70m (5'7")
Bedroom 2	3.60m (11'10") x 3.10m (10'2")
Bathroom	2.60m (8'6") x 1.70m (5'7")

Gross internal floor area (m²): 98m²

EPC Rating: C