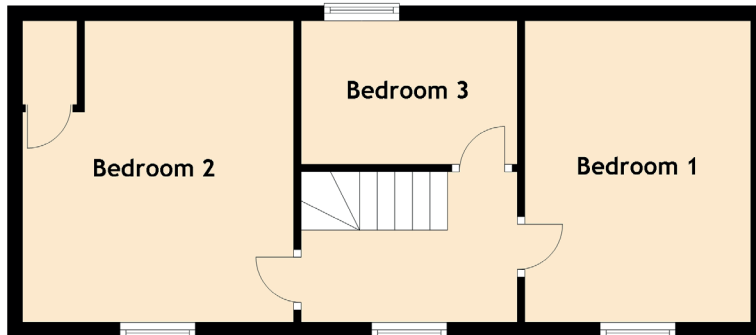
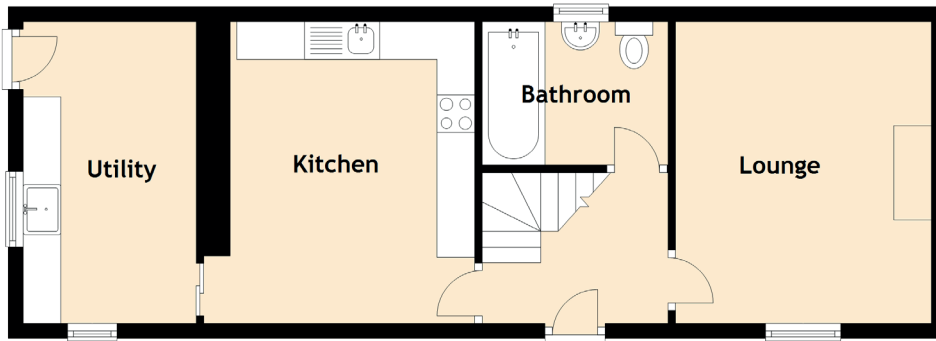


# 9 Strathnaver

KINBRACE, SUTHERLAND, HIGHLAND, KW11 6UA



Approximate Dimensions (Taken from the widest point)

Lounge	4.00m (13'1") x 3.40m (11'2")
Kitchen	4.00m (13'1") x 3.25m (10'8")
Utility	4.00m (13'1") x 2.30m (7'7")
Bedroom 1	4.10m (13'5") x 3.00m (9'10")
Bedroom 2	4.00m (13'1") x 3.50m (11'6")
Bedroom 3	3.00m (9'10") x 2.00m (6'7")
Bathroom	2.47m (8'1") x 1.90m (6'3")