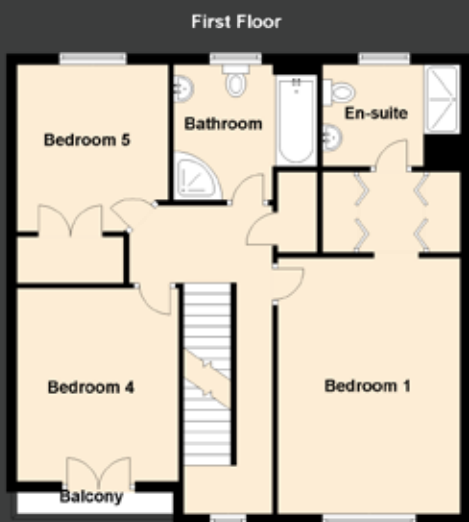
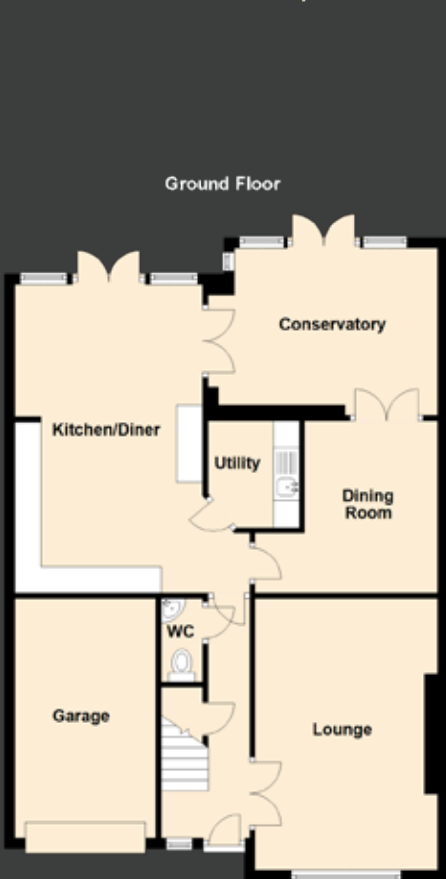


8 Kintail Place

DUNFERMLINE, FIFE, KY11 8FP



Approximate Dimensions (Taken from the widest point)

Lounge	5.20m (17'1") x 3.50m (11'6")
Dining Room	3.50m (11'6") x 3.30m (10'10")
Conservatory	
Kitchen/Diner	5.90m (19'4") x 3.60m (11'10")
Utility	2.05m (6'9") x 1.75m (5'9")
WC	1.60m (5'3") x 0.80m (2'7")

First Floor	
Bedroom 1	4.90m (16'1") x 3.55m (11'8")
En-suite	2.65m (8'8") x 1.95m (6'5")
Bedroom 4	3.70m (12'2") x 3.10m (10'2")
Bedroom 5	3.20m (10'6") x 2.90m (9'6")
Bathroom	2.75m (9') x 2.60m (8'6")

Second Floor	
Bedroom 2	7.30m (24') x 4.54m (14'11")
Bedroom 3	5.90m (19'4") x 2.90m (9'6")
Shower Room	2.50m (8'2") x 1.80m (5'11")

Gross internal floor area (m²): 174m² | EPC Rating: C

Extras (Included in the sale): Floor coverings, light fittings, blinds, window dressings and integrated appliances.