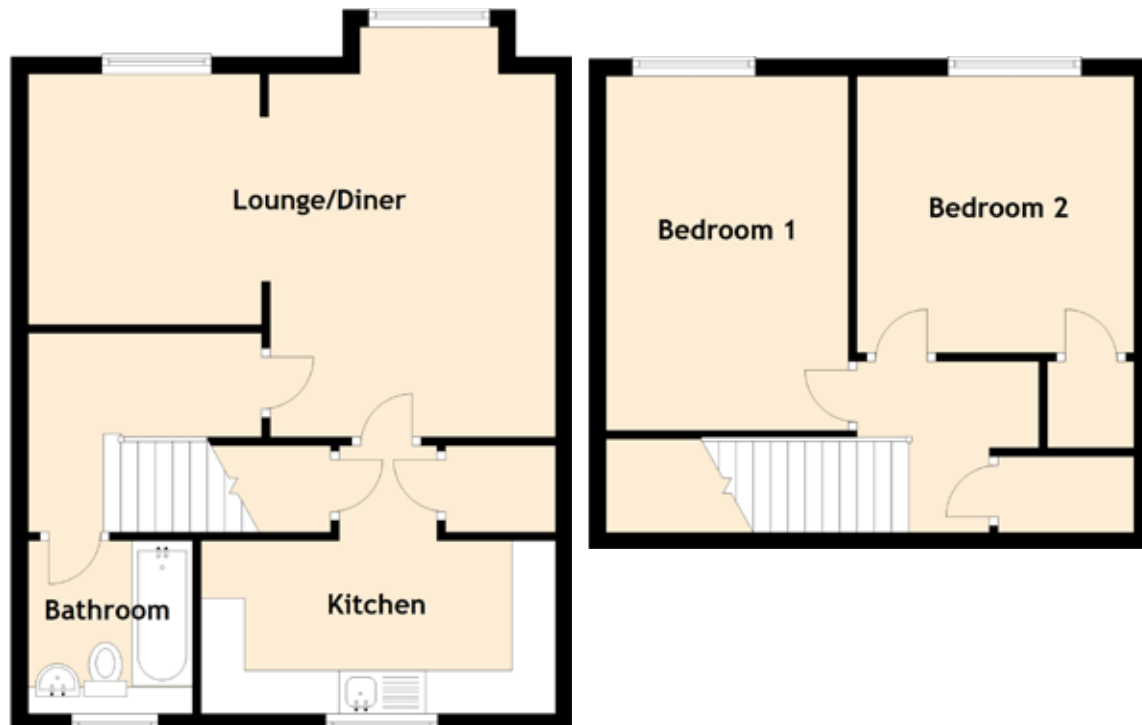


# 13 Lulworth Court

DUNDEE, DD4 0LS



Approximate Dimensions  
(Taken from the widest point)

Lounge/Diner	6.10m (20') x 4.20m (13'9")
Kitchen	4.10m (13'5") x 2.00m (6'7")
Bedroom 1	4.10m (13'5") x 2.80m (9'2")
Bedroom 2	3.20m (10'6") x 3.20m (10'6")
Bathroom	2.00m (6'7") x 1.90m (6'3")

Gross internal floor area (m<sup>2</sup>): 77m<sup>2</sup>

EPC Rating: C