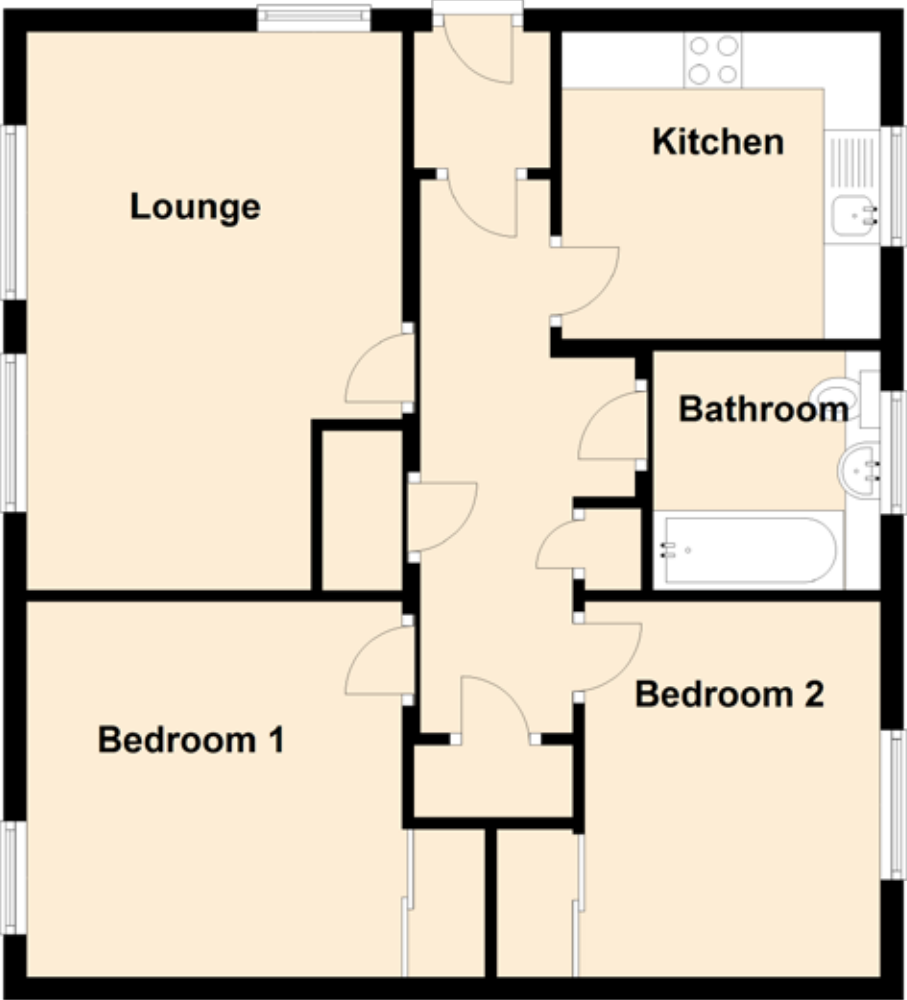


37 Victoria Street

NEWPORT ON TAY, DD6 8DJ



Approximate Dimensions (Taken from the widest point)

Lounge	4.90m (16'1") x 3.30m (10'10")
Kitchen	2.80m (9'2") x 2.70m (8'10")
Bedroom 1	3.30m (10'10") x 3.30m (10'10")
Bedroom 2	3.30m (10'10") x 2.60m (8'6")
Bathroom	2.10m (6'11") x 2.00m (6'7")

Gross internal floor area (m²): 61m²

EPC Rating: C