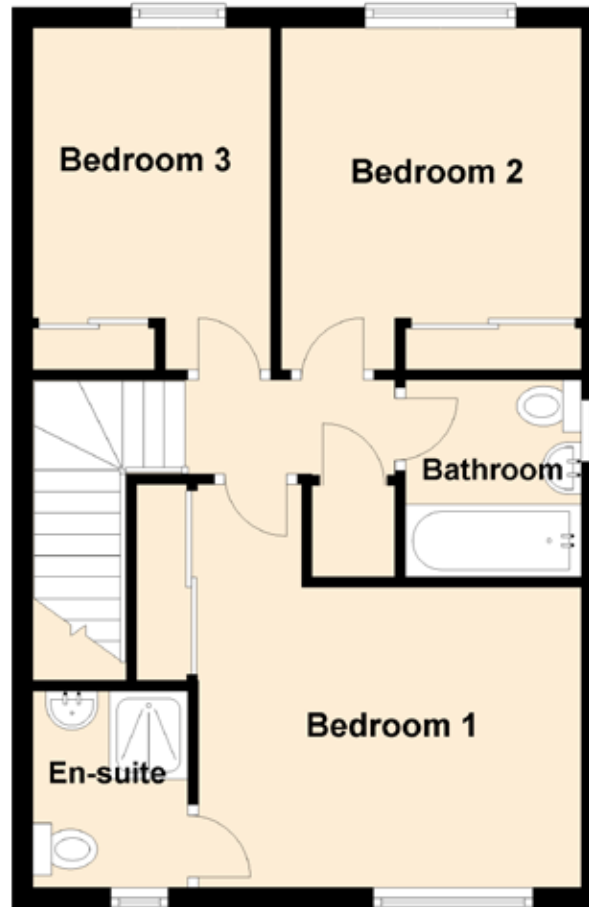
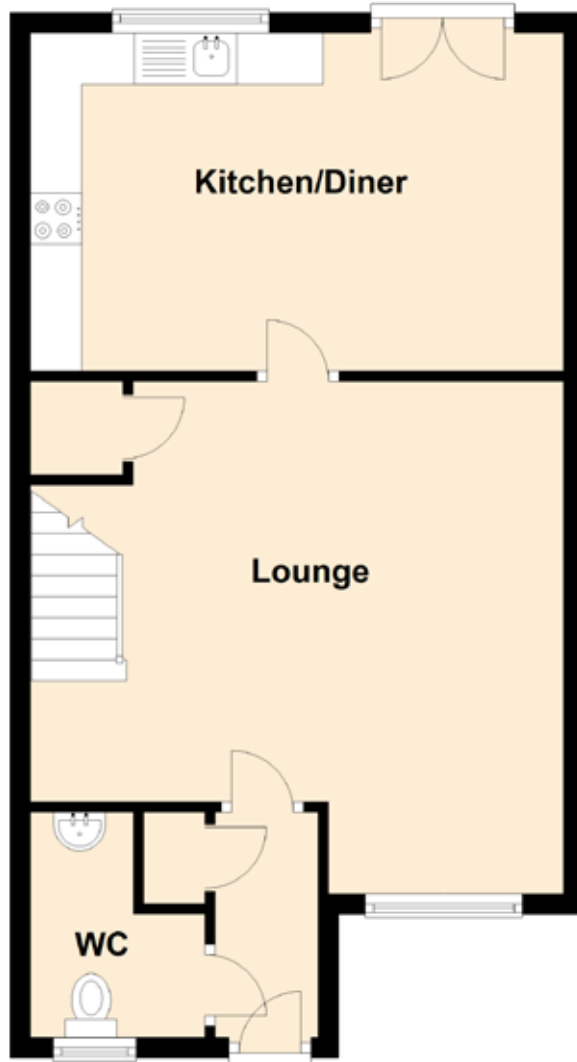


# 10 Corbie Wood



Approximate Dimensions  
(Taken from the widest point)

Lounge	5.20m (17'1") x 5.00m (16'5")
Kitchen/Diner	5.20m (17'1") x 3.30m (10'10")
Bedroom 1	3.80m (12'6") x 3.70m (12'2")
Bedroom 2	3.30m (10'10") x 2.90m (9'6")
Bedroom 3	3.30m (10'10") x 2.30m (7'7")
Bathroom	1.90m (6'3") x 1.70m (5'7")
En-suite	1.90m (6'3") x 1.50m (4'11")
WC	2.20m (7'3") x 1.70m (5'7")

Gross internal floor area (m<sup>2</sup>): 92m<sup>2</sup>

EPC Rating: C