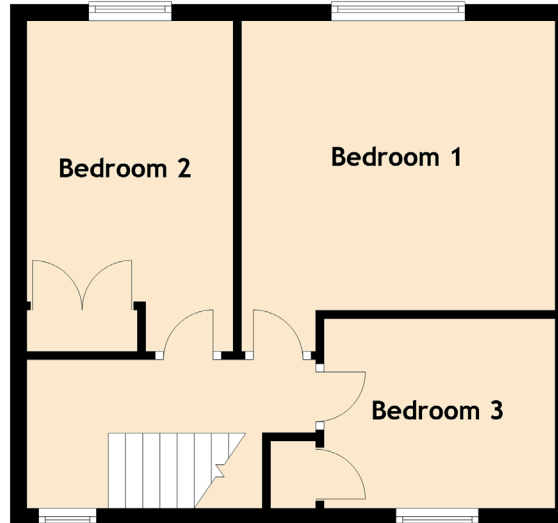
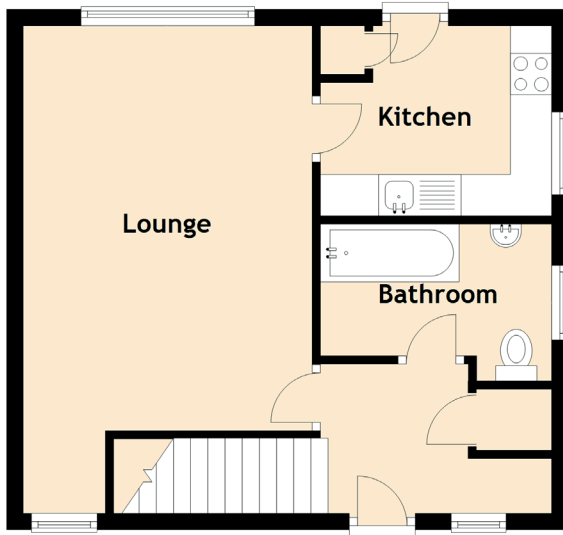


# 12 Calderhall Avenue

EAST CALDER, LIVINGSTON, EH53 0DJ



Approximate Dimensions  
(Taken from the widest point)

Ground Floor

Lounge	4.90m (16'1") x 3.50m (11'6")
Kitchen	2.80m (9'2") x 2.30m (7'7")
Bathroom	2.80m (9'2") x 1.65m (5'5")

First Floor

Bedroom 1	4.00m (13'1") x 3.80m (12'6")
Bedroom 2	4.00m (13'1") x 2.70m (8'10")
Bedroom 3	2.80m (9'2") x 2.60m (8'6")