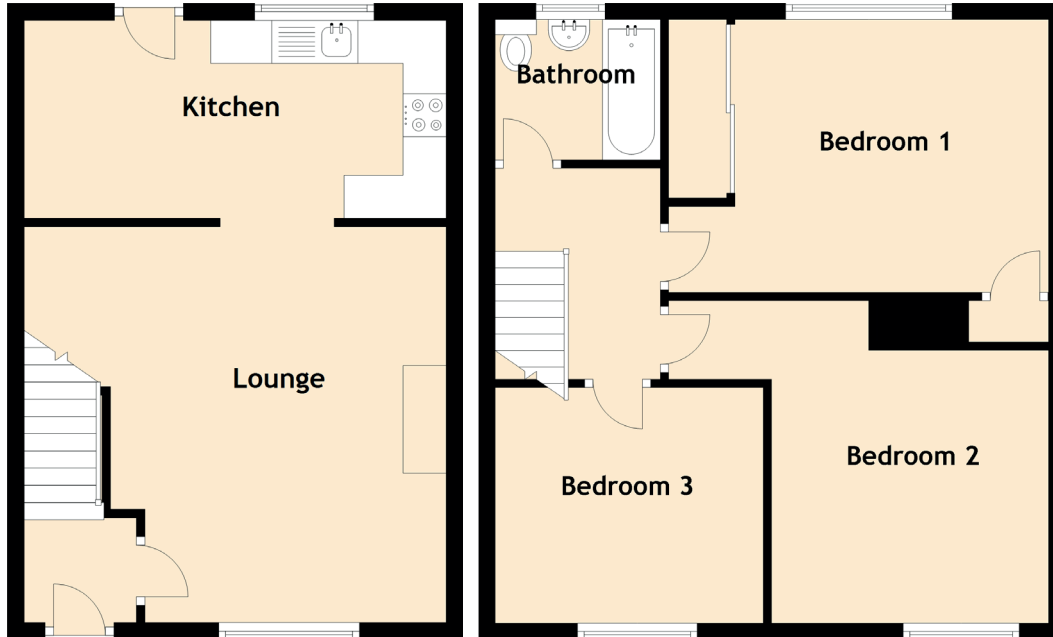


5 Tayside

AIRDRIE, NORTH LANARKSHIRE, ML6 OLD



Approximate Dimensions

(Taken from the widest point)

Lounge	4.90m (16'1") x 3.90m (12'9")
Kitchen	4.90m (16'1") x 2.30m (7'7")
Bedroom 1	4.60m (15'1") x 3.30m (10'10")
Bedroom 2	3.90m (12'10") x 3.35m (11')
Bedroom 3	2.85m (9'4") x 2.80m (9'2")
Bathroom	2.00m (6'7") x 1.70m (5'7")

Gross internal floor area (m²): 82m²

EPC Rating: D