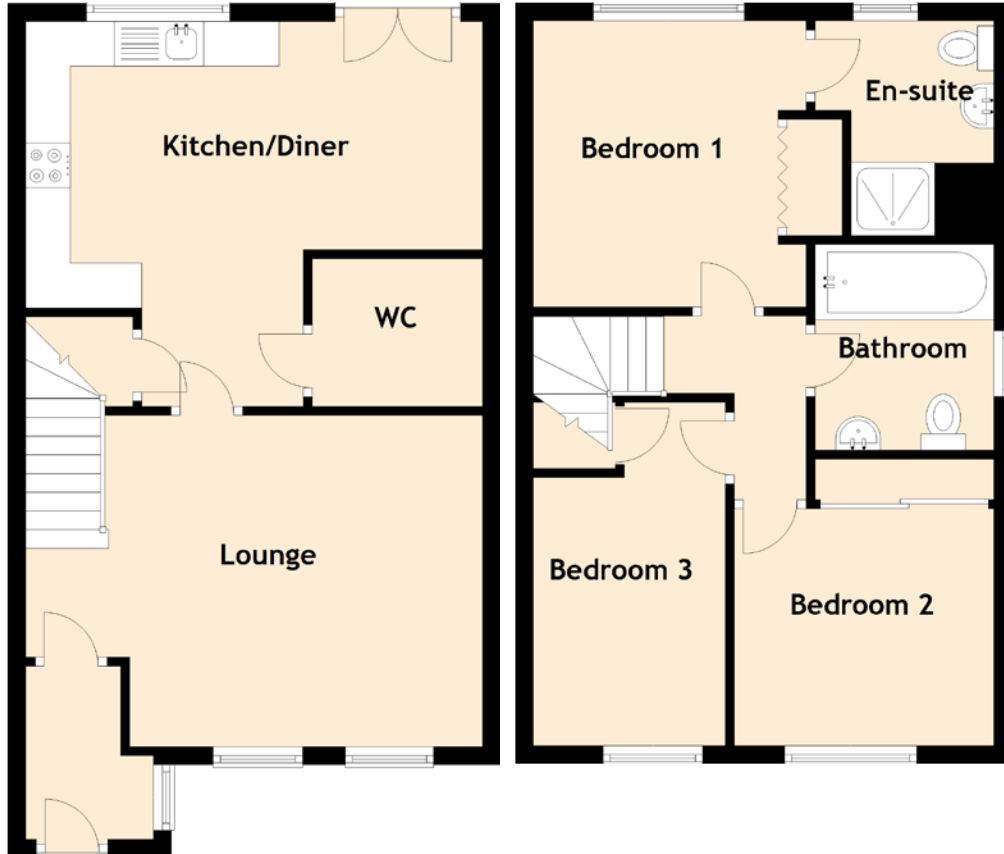


# 29 Kingston Road

KIRKCALDY, FIFE, KY2 6FE



## *THE DETAILS*

Approximate Dimensions  
(Taken from the widest point)

Lounge	5.10m (16'9") x 3.70m (12'2")
Kitchen/Diner	5.10m (16'9") x 4.30m (14'1")
WC	1.90m (6'3") x 1.65m (5'5")
Bedroom 1	3.20m (10'6") x 3.05m (10')
En-suite	2.40m (7'10") x 1.60m (5'3")
Bedroom 2	2.90m (9'6") x 2.65m (8'8")
Bedroom 3	3.95m (13') x 2.05m (6'9")
Bathroom	2.55m (8'4") x 1.80m (5'11")

Gross internal floor area (m<sup>2</sup>): 83m<sup>2</sup>

EPC Rating: C

Extras (Included in the sale): Floor coverings, light fittings, blinds and window dressings.