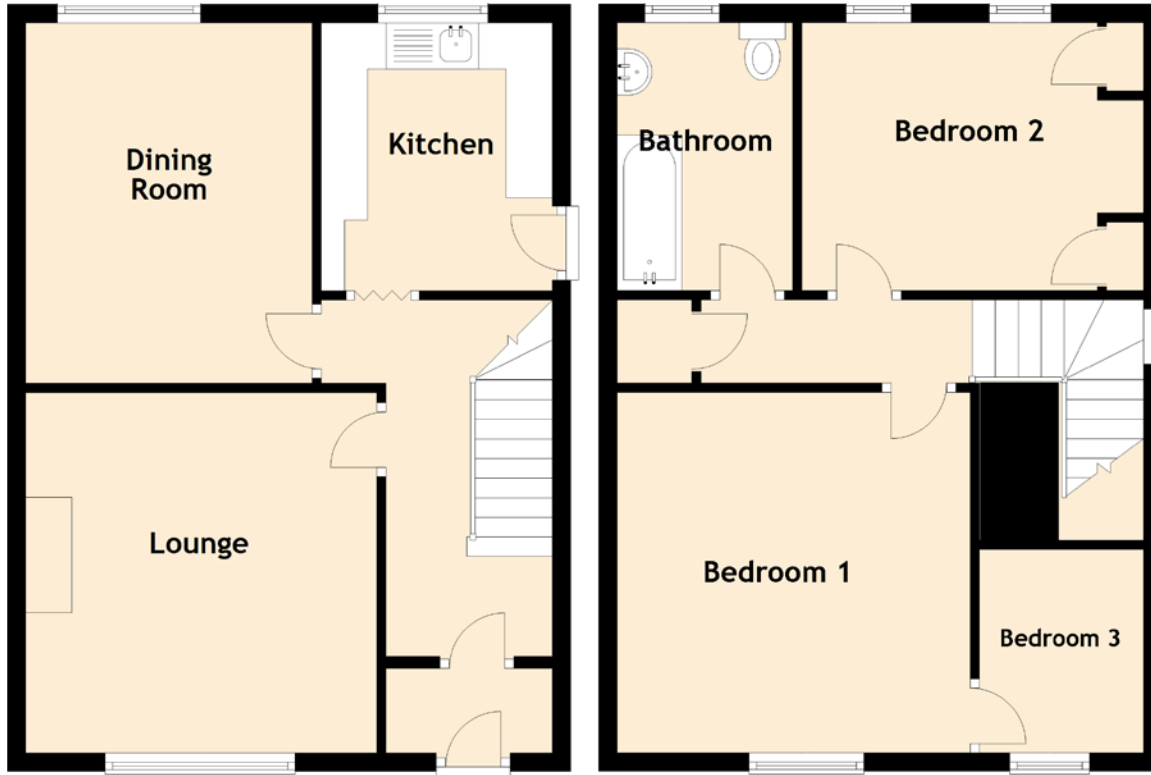


31 Downie Park

DUNDEE, DD3 8JW



Approximate Dimensions
(Taken from the widest point)

Lounge	3.90m (12'10") x 3.80m (12'6")
Dining Room	3.90m (12'10") x 3.10m (10'2")
Kitchen	2.90m (9'6") x 2.50m (8'2")
Bedroom 1	3.90m (12'10") x 3.20m (10'6")
Bedroom 2	3.70m (12'2") x 2.90m (9'6")
Bedroom 3	2.20m (7'3") x 1.80m (5'11")
Bathroom	2.80m (9'2") x 1.90m (6'3")

Gross internal floor area (m²): 92m²

EPC Rating: C

Extras (Included in the sale): Floor coverings, blinds, light fittings and built-in appliances.