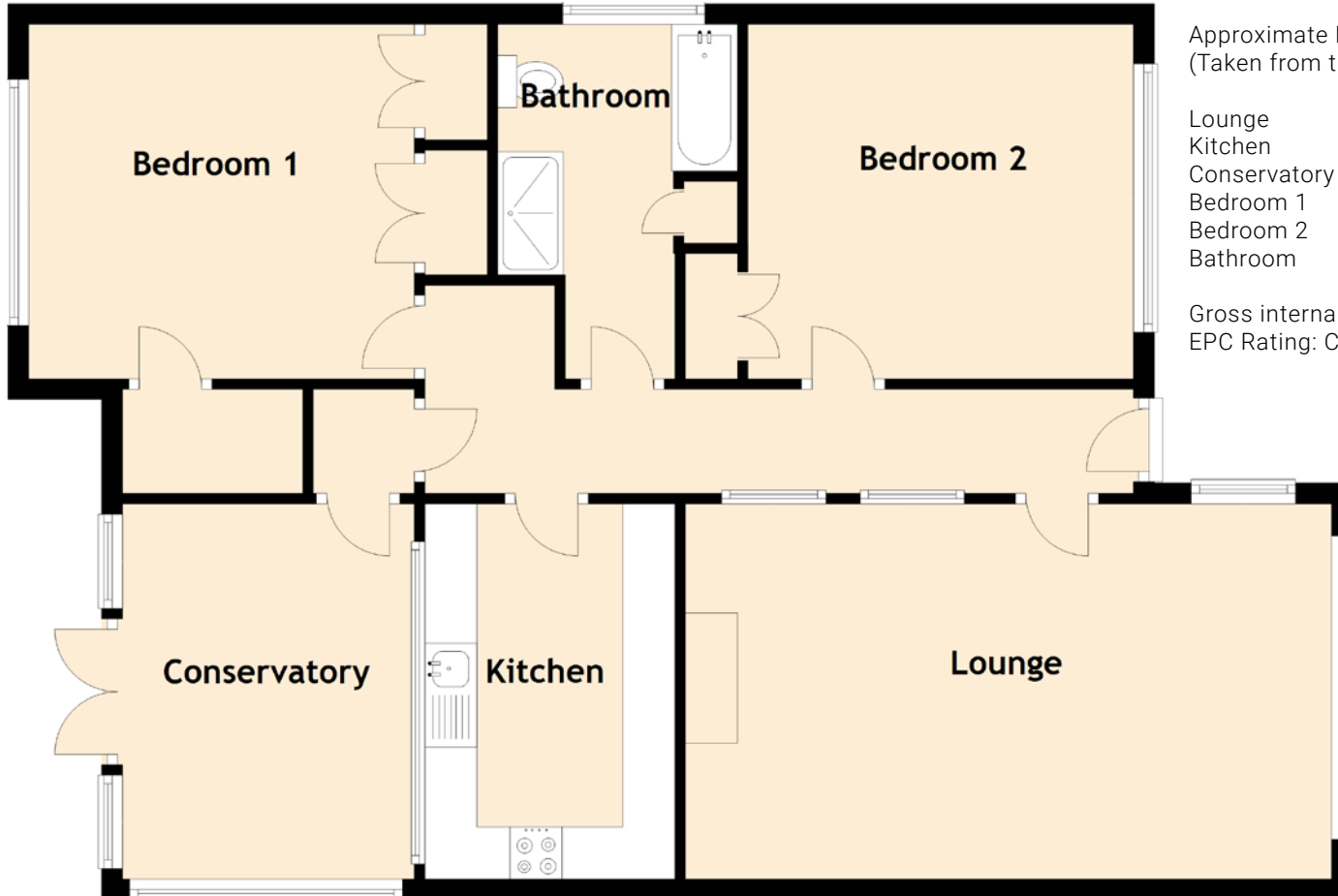


Strontian

HILLSIDE TERRACE, MOFFAT, DG10 9RT



Approximate Dimensions
(Taken from the widest point)

Lounge	6.20m (20'4") x 3.60m (11'10")
Kitchen	3.60m (11'10") x 2.40m (7'10")
Conservatory	3.60m (11'10") x 2.80m (9'2")
Bedroom 1	3.70m (12'2") x 3.60m (11'10")
Bedroom 2	3.70m (12'2") x 3.40m (11'2")
Bathroom	2.30m (7'7") x 2.10m (6'11")

Gross internal floor area (m²): 85m²
EPC Rating: C