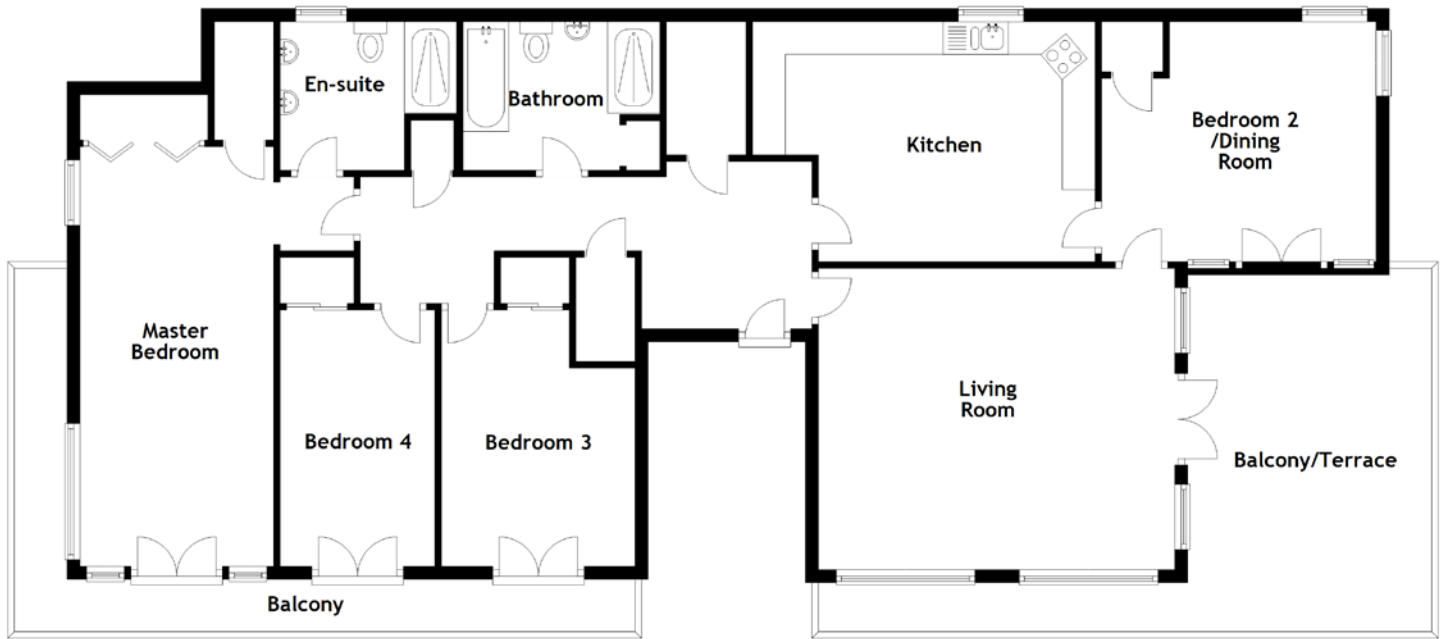


FLOOR PLAN, DIMENSIONS & MAP



Approximate Dimensions
(Taken from the widest point)

Living Room 5.45m (17'11") x 4.61m (15'1")
 Kitchen 4.23m (13'11") x 3.67m (12')
 Bathroom 3.01m (9'11") x 2.27m (7'5")
 Master Bedroom 6.42m (21'1") x 2.96m (9'9")
 En-suite 2.70m (8'10") x 2.27m (7'5")

Bedroom 2/Dining 4.20m (13'9") x 3.95m (13')
 Bedroom 3 3.92m (12'10") x 2.96m (9'9")
 Bedroom 4 3.92m (12'10") x 2.37m (7'9")
 Balcony/Terrace 9.43m (30'11") x 5.56m (18'3")
 Balcony 9.01m (29'7") x 5.51m (18'1")

Gross internal floor area (m²): TBCm²
 EPC Rating: TBC

