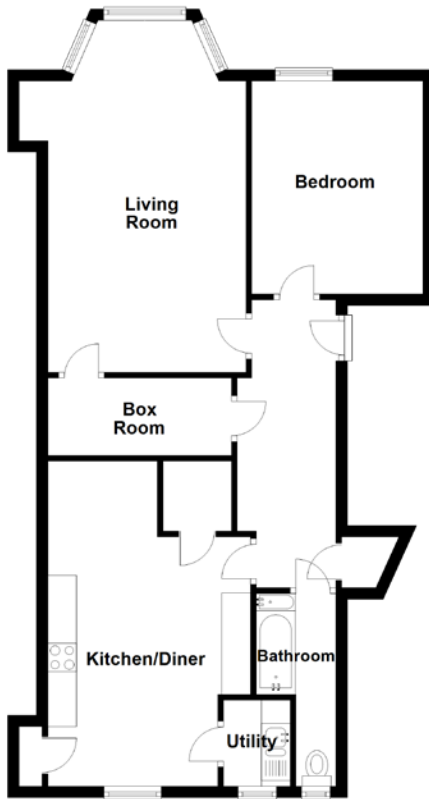
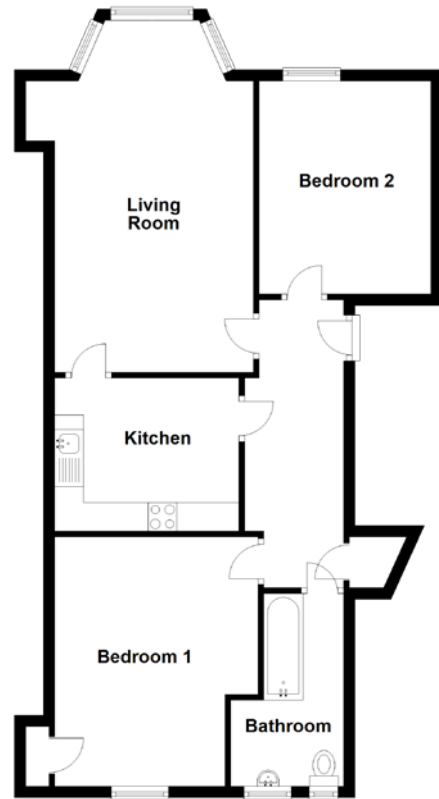


FLOOR PLAN, DIMENSIONS & MAP

Original Floor Plan



Proposed Floor Plan



Approximate Dimensions
(Taken from the widest point)

Living Room 6.27m (20'7") x 3.47m (11'4")
 Kitchen/Diner 5.64m (18'6") x 3.30m (10'10")
 Box Room 3.36m (11') x 1.35m (4'5")

Bedroom 3.72m (12'2") x 3.00m (9'10")
 Bathroom 3.30m (10'10") x 1.34m (4'5")
 Utility 1.36m (4'6") x 1.16m (3'10")

Gross internal floor area (m²): 69m²
 EPC Rating: C

