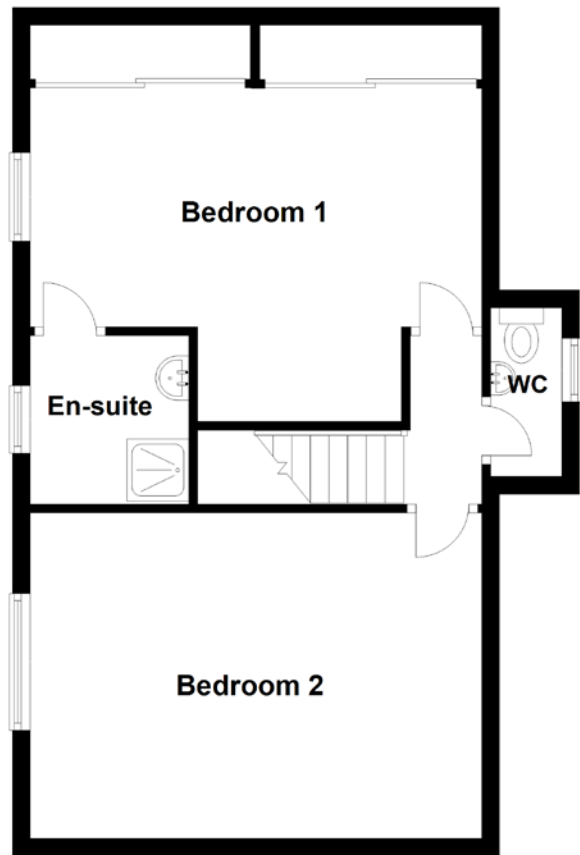
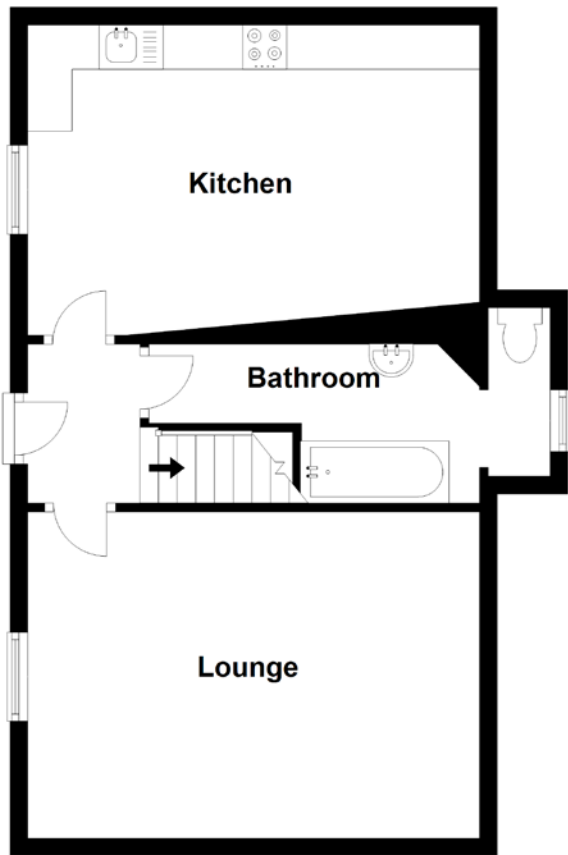


FLOOR PLAN, DIMENSIONS & MAP



Approximate Dimensions
(Taken from the widest point)

Lounge	5.10m (16'9") x 3.60m (11'10")
Kitchen	4.80m (15'9") x 3.50m (11'6")
Bedroom 1	5.00m (16'5") x 3.50m (11'6")
En-suite	1.90m (6'3") x 1.40m (4'7")

Bedroom 2	5.10m (16'9") x 3.60m (11'10")
Bathroom	5.30m (17'5") x 1.80m (5'11")
WC	2.00m (6'7") x 0.80m (2'8")

Gross internal floor area (m²): 94m²

EPC Rating: D

