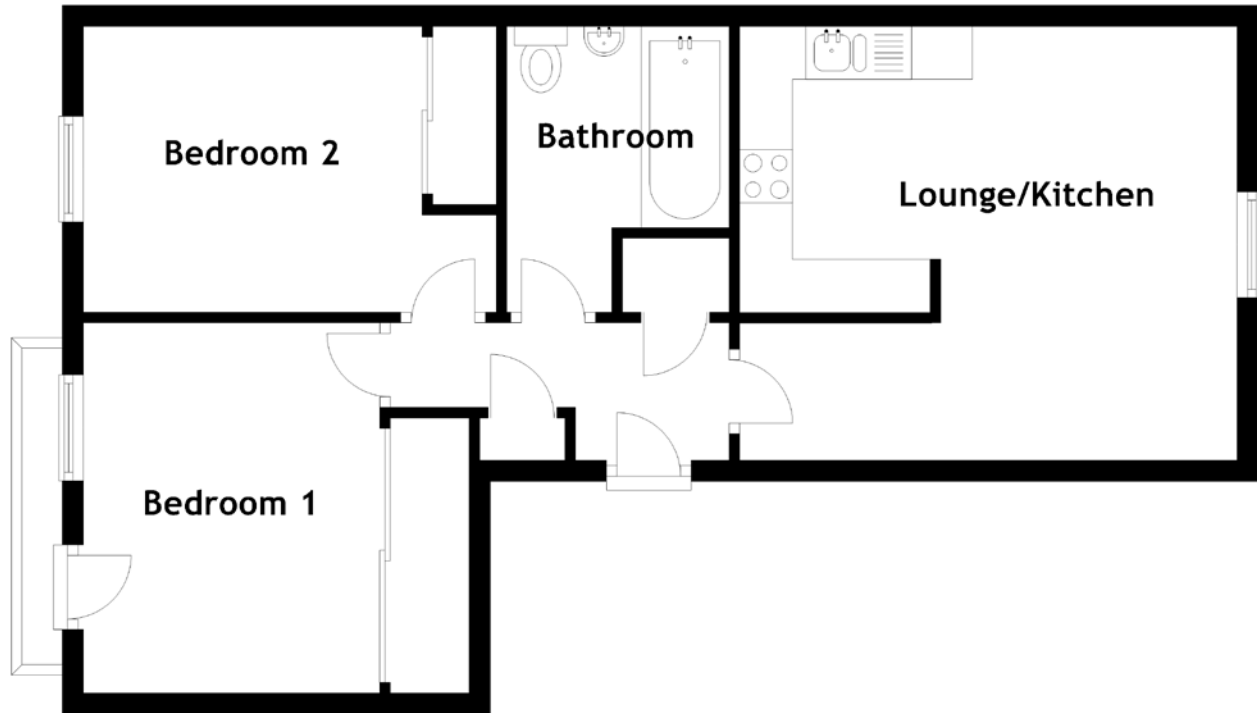


FLOOR PLAN, DIMENSIONS & MAP



Approximate Dimensions
(Taken from the widest point)

Lounge/Kitchen 4.70m (15'5") x 4.10m (13'5")
Bedroom 1 3.50m (11'6") x 2.80m (9'2")

Bedroom 2 3.20m (10'6") x 2.70m (8'10")
Bathroom 2.70m (8'10") x 2.10m (6'11")

Gross internal floor area (m²): 52m²
EPC Rating: B

