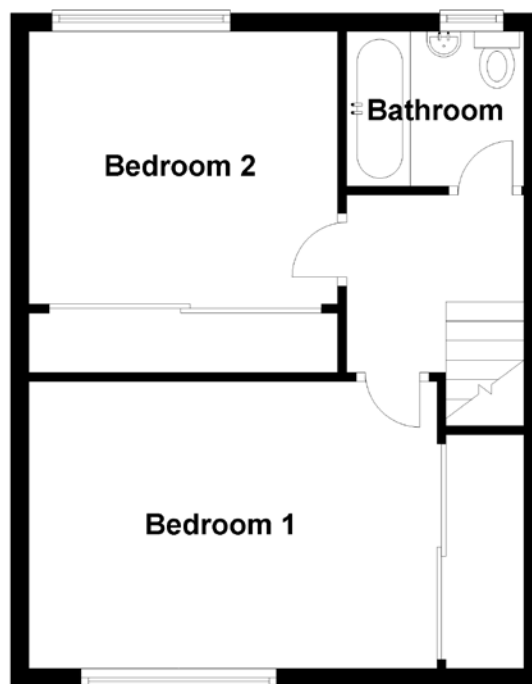
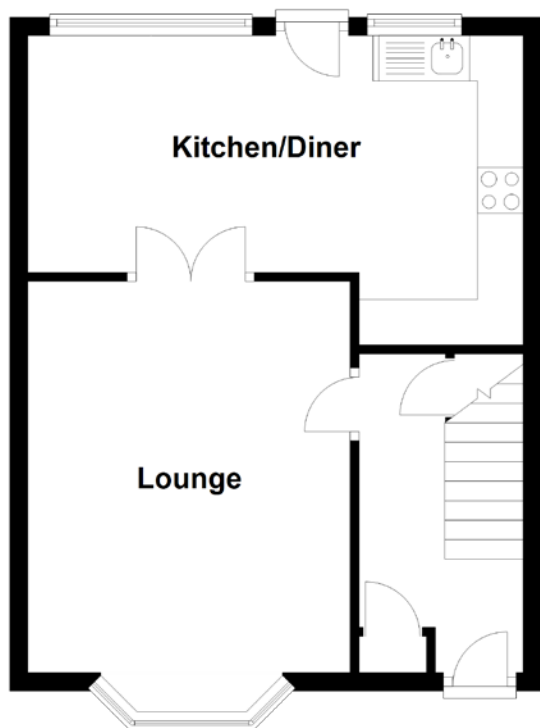


FLOOR PLAN, DIMENSIONS & MAP



Approximate Dimensions (Taken from the widest point)

Lounge	4.30m (14'1") x 3.55m (11'8")
Kitchen/Diner	5.45m (17'11") x 3.40m (11'2")
Bedroom 1	4.45m (14'7") x 3.15m (10'4")
Bedroom 2	3.40m (11'2") x 3.00m (9'10")
Bathroom	2.05m (6'9") x 1.70m (5'7")

Gross internal floor area (m²): 78m²

EPC Rating: C

Extras (Included in the sale): Carpets and floor coverings, light fixtures and fittings, curtains and blinds.

