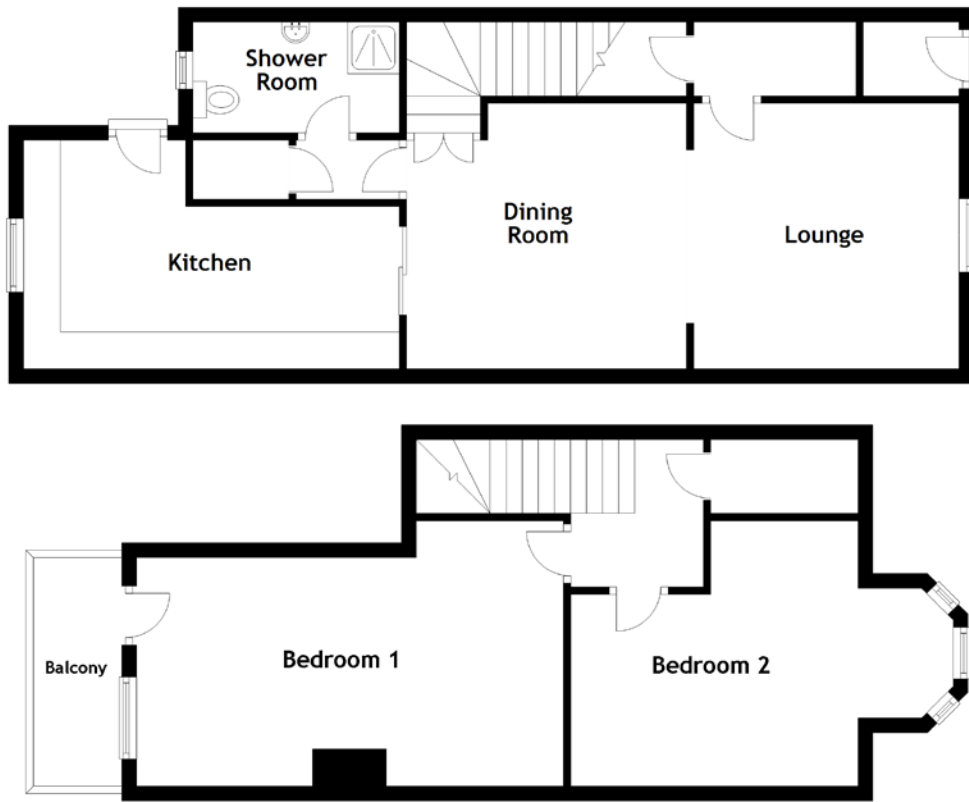


FLOOR PLAN, DIMENSIONS & MAP



Approximate Dimensions (Taken from the widest point)

Lounge	3.60m (11'10") x 3.60m (11'10")
Dining Room	3.80m (12'6") x 3.60m (11'10")
Kitchen	5.10m (16'9") x 3.00m (9'10")
Shower Room	2.80m (9'2") x 1.50m (4'11")

Bedroom 1	5.80m (19') x 3.60m (11'10")
Balcony	3.10m (10'2") x 1.70m (5'7")
Bedroom 2	5.10m (16'9") x 3.60m (11'10")

Gross internal floor area (m²): 90m²

EPC Rating: F

