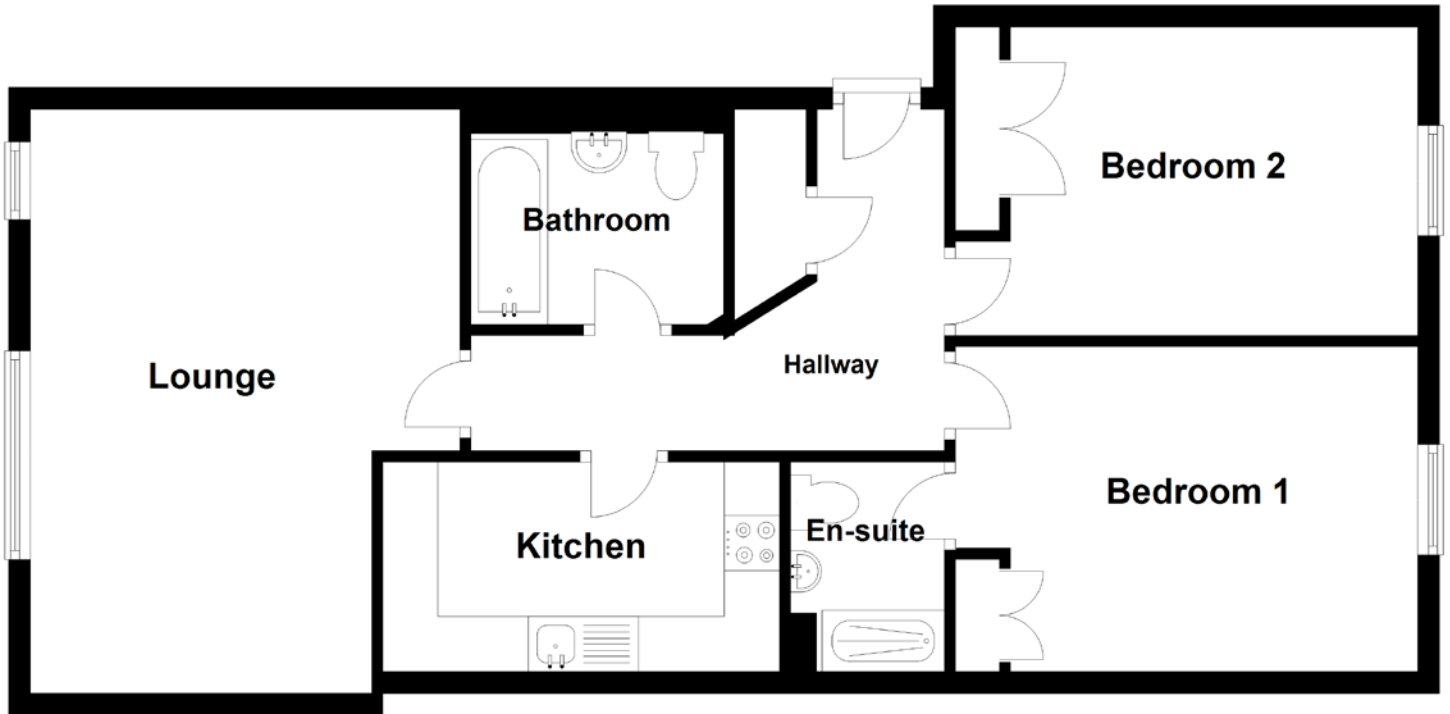


FLOOR PLAN, DIMENSIONS & MAP



Approximate Dimensions
(Taken from the widest point)

Lounge 5.30m (17'5") x 3.90m (12'10")
 Kitchen 3.60m (11'10") x 1.90m (6'3")
 Bedroom 1 4.25m (13'11") x 2.95m (9'8")

En-suite 1.90m (6'3") x 1.40m (4'7")
 Bedroom 2 4.25m (13'11") x 2.80m (9'2")
 Bathroom 2.30m (7'6") x 1.95m (6'5")

Gross internal floor area (m²): 71m²
 EPC Rating: C

