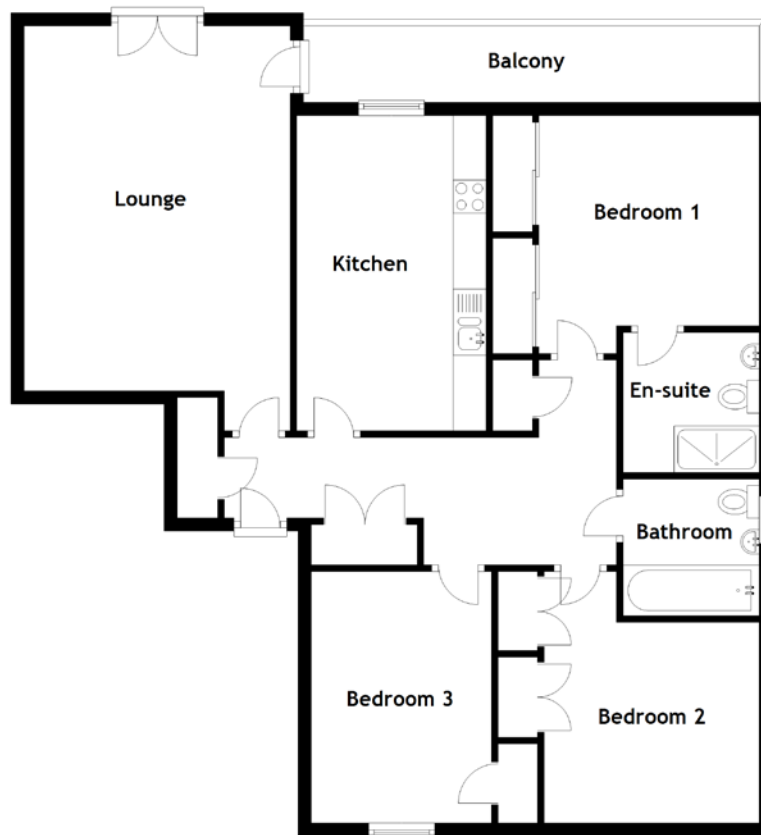


FLOOR PLAN, DIMENSIONS & MAP



Approximate Dimensions (Taken from the widest point)

Lounge 6.13m (20'1") x 4.03m (13'3")
 Kitchen 4.77m (15'8") x 2.87m (9'5")
 Bedroom 1 3.34m (10'11") x 3.18m (10'5")
 En-suite 2.12m (6'11") x 2.06m (6'9")

Bedroom 2 3.81m (12'6") x 3.26m (10'8")
 Bedroom 3 3.81m (12'6") x 2.73m (8'11")
 Bathroom 2.07m (6'9") x 2.06m (6'9")

Gross internal floor area (m²): 101m²
 EPC Rating: B

