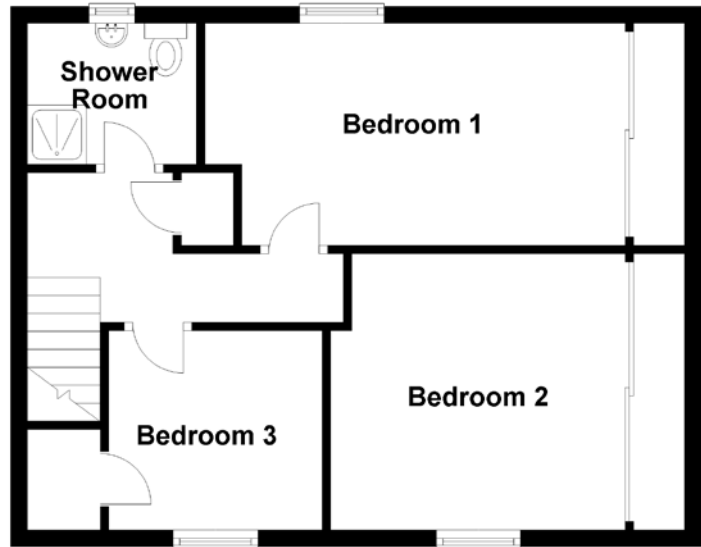
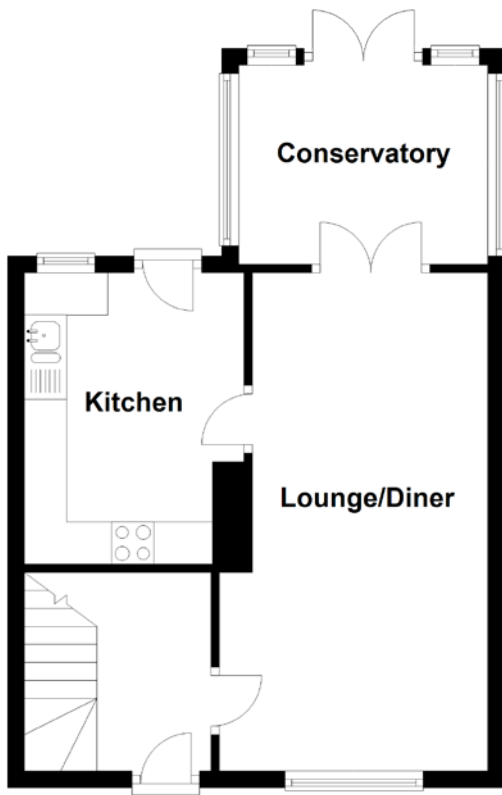


FLOOR PLAN, DIMENSIONS & MAP



Approximate Dimensions (Taken from the widest point)

Lounge/Diner	5.90m (19'4") x 3.18m (10'5")
Kitchen	3.48m (11'5") x 2.57m (8'5")
Conservatory	2.95m (9'8") x 2.36m (7'9")
Bedroom 1	4.98m (16'4") x 2.63m (8'8")

Bedroom 2	3.49m (11'5") x 3.27m (10'9")
Bedroom 3	2.53m (8'4") x 2.36m (7'9")
Shower Room	1.95m (6'5") x 1.67m (5'6")

Gross internal floor area (m²): 75m²
EPC Rating: C

