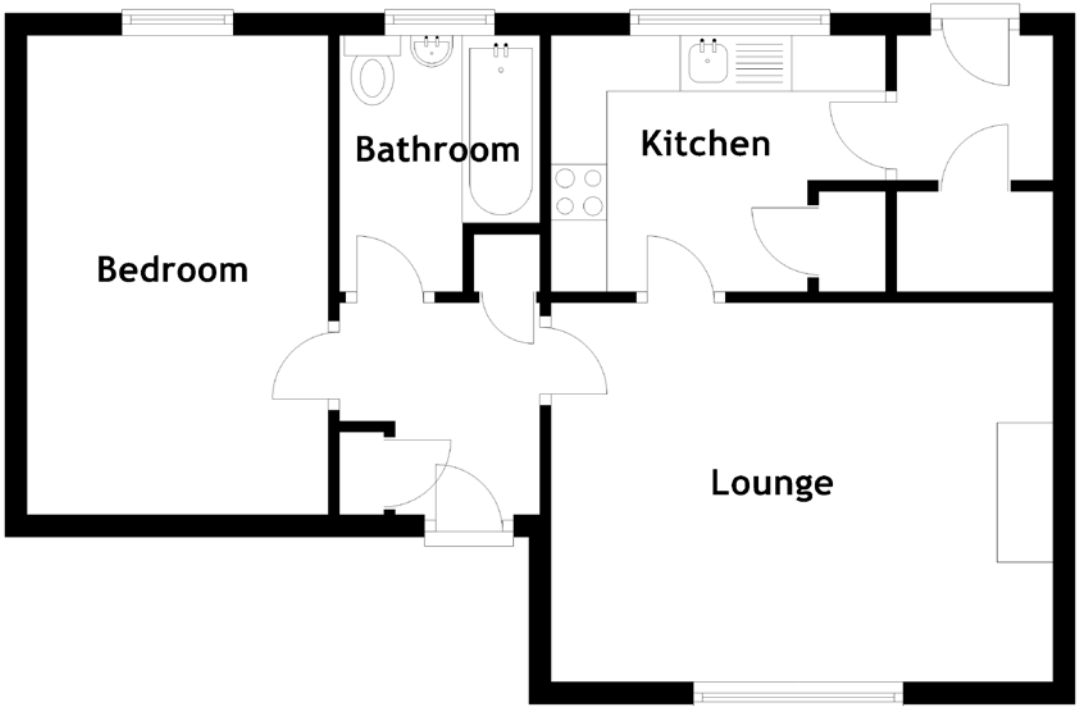


FLOOR PLAN, DIMENSIONS & MAP



Approximate Dimensions
(Taken from the widest point)

Bedroom	4.30m (14'1") x 2.70m (8'10")
Bathroom	2.20m (7'3") x 1.80m (5'11")

Lounge	4.50m (14'9") x 3.40m (11'2")
Kitchen	3.00m (9'10") x 2.30m (7'7")

Gross internal floor area (m²): 46m²
EPC Rating: D

