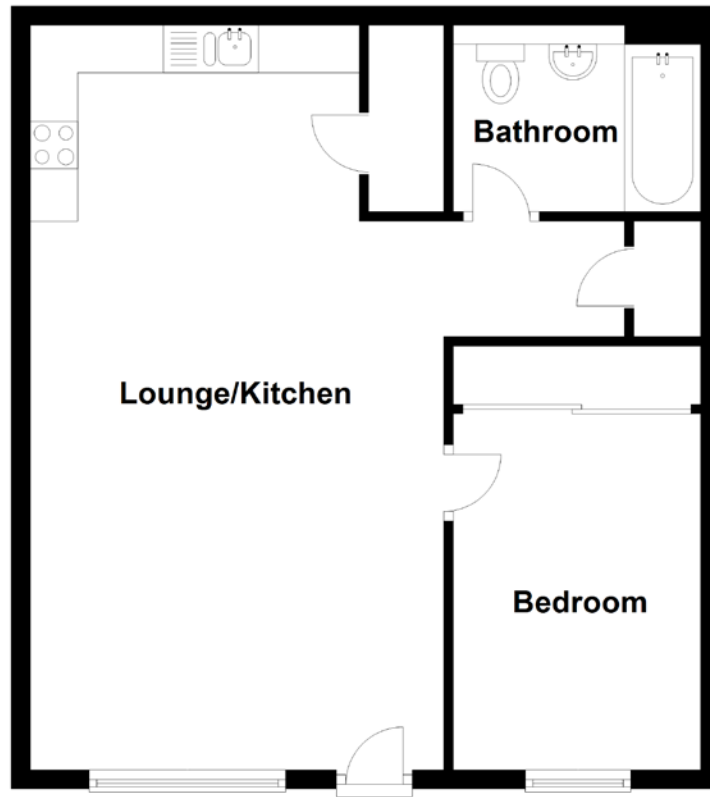


# FLOOR PLAN, DIMENSIONS & MAP



Approximate Dimensions (Taken from the widest point)

Lounge/Kitchen 7.83m (25'8") x 6.25m (20'6")

Bedroom 3.74m (12'3") x 2.60m (8'6")

Bathroom 2.59m (8'6") x 1.96m (6'5")

Gross internal floor area (m<sup>2</sup>): 55m<sup>2</sup>

EPC Rating: B

