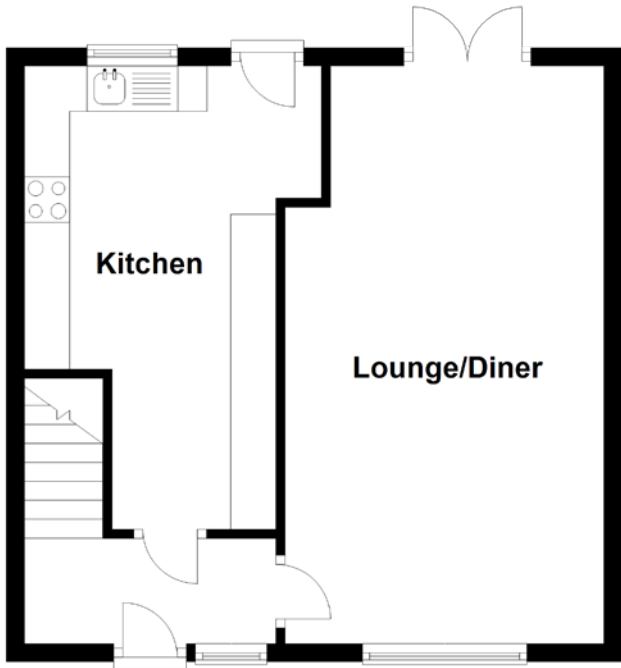


# FLOOR PLAN, DIMENSIONS & MAP



Approximate Dimensions  
(Taken from the widest point)

Lounge/Diner 6.37m (20'11") x 3.51m (11'6")  
Kitchen 5.11m (16'9") x 3.27m (10'9")  
Shower Room 1.97m (6'6") x 1.71m (5'7")

Bedroom 1 3.77m (12'4") x 2.62m (8'7")  
Bedroom 2 3.69m (12'1") x 3.69m (12'1")  
Bedroom 3 2.79m (9'2") x 2.38m (7'10")

Gross internal floor area (m<sup>2</sup>): 82m<sup>2</sup>  
EPC Rating: B

