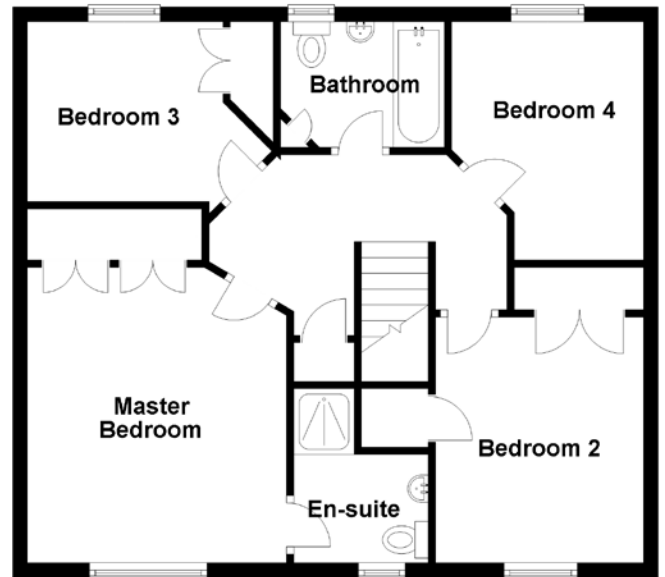
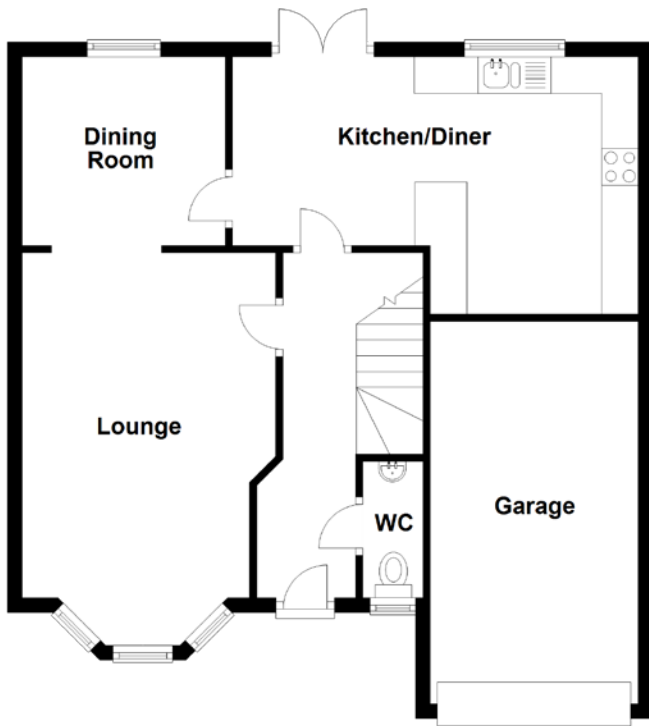


FLOOR PLAN, DIMENSIONS & MAP



Approximate Dimensions (Taken from the widest point)

| | |
|----------------|-------------------------------|
| Lounge | 5.37m (17'7") x 3.47m (11'5") |
| Dining Room | 2.78m (9'1") x 2.58m (8'6") |
| Kitchen/Diner | 5.55m (18'3") x 3.52m (11'7") |
| WC | 1.87m (6'2") x 0.82m (2'8") |
| Master Bedroom | 4.04m (13'3") x 3.58m (11'9") |
| En-suite | 2.65m (8'8") x 1.84m (6') |
| Bedroom 2 | 3.36m (11') x 2.85m (9'4") |
| Bedroom 3 | 3.37m (11'1") x 2.70m (8'10") |

| | |
|-----------|-------------------------------|
| Bedroom 4 | 3.29m (10'10") x 2.55m (8'4") |
| Bathroom | 2.24m (7'4") x 1.72m (5'8") |
| Garage | 5.23m (17'2") x 2.85m (9'4") |

Gross internal floor area (m²): 112m²
EPC Rating: C

Extras (Included in the sale): Selected fixtures and fittings, including; blinds, curtains, light fittings, carpets, and fitted floor coverings.

