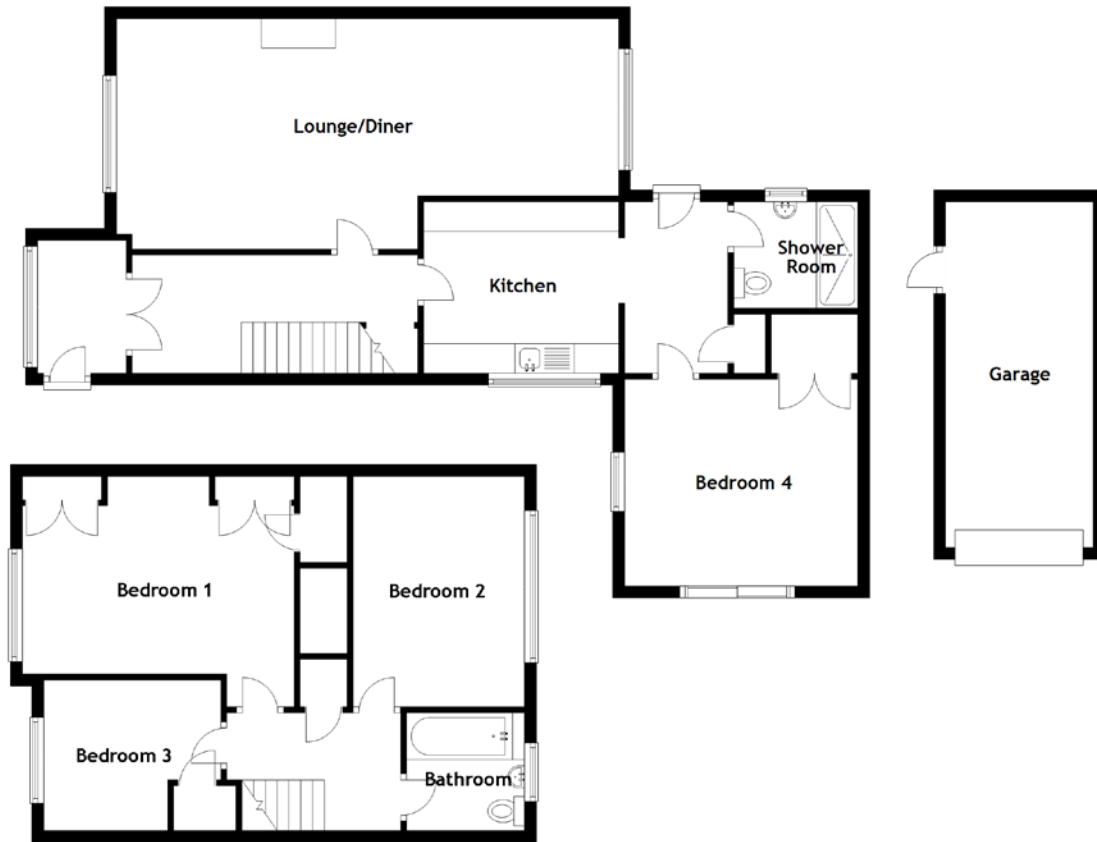


FLOOR PLAN, DIMENSIONS & MAP



Approximate Dimensions
(Taken from the widest point)

Lounge/Diner	8.50m (27'11") x 3.90m (12'10")
Kitchen	3.30m (10'10") x 2.90m (9'6")
Bedroom 4	3.95m (13') x 3.50m (11'6")
Shower Room	2.10m (6'11") x 1.80m (5'11")

Bathroom	2.15m (7'1") x 1.95m (6'5")
Bedroom 1	4.60m (15'1") x 3.90m (12'10")
Bedroom 2	3.90m (12'10") x 2.90m (9'6")
Bedroom 3	3.00m (9'10") x 2.55m (8'4")
Garage	5.85m (19'2") x 2.50m (8'2")

Gross internal floor area (m²): 118m² | EPC Rating: C

