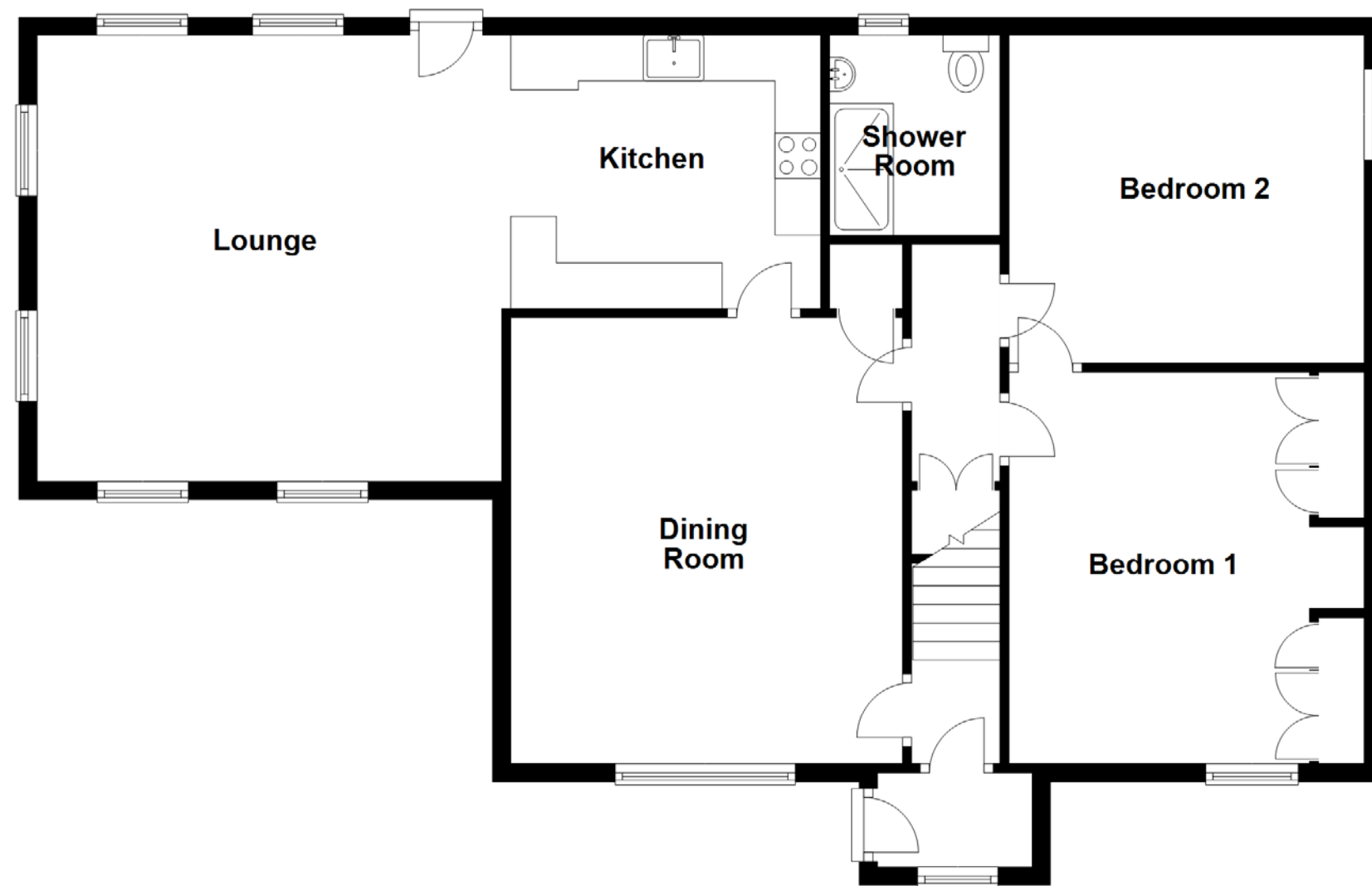
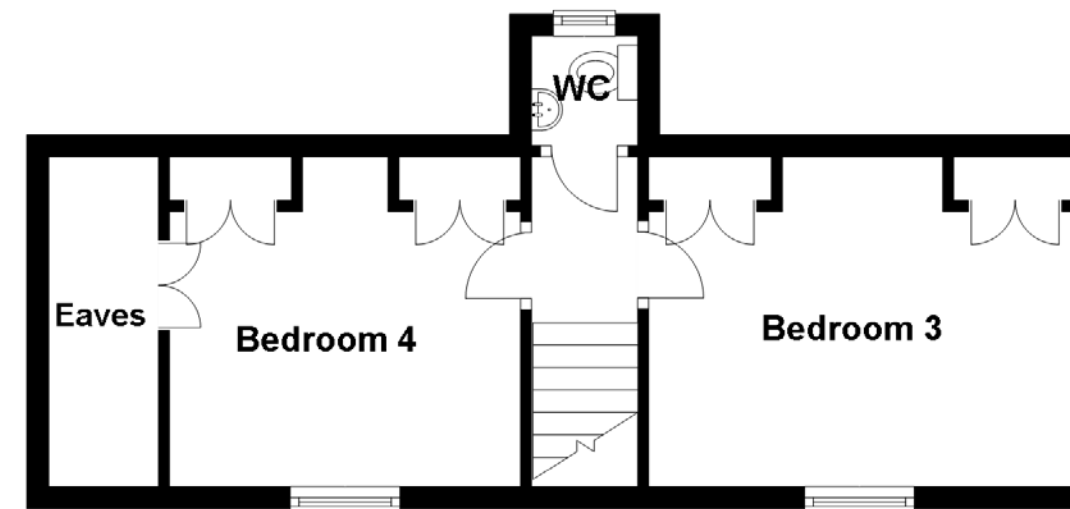


# The *Floor plan & Dimensions*

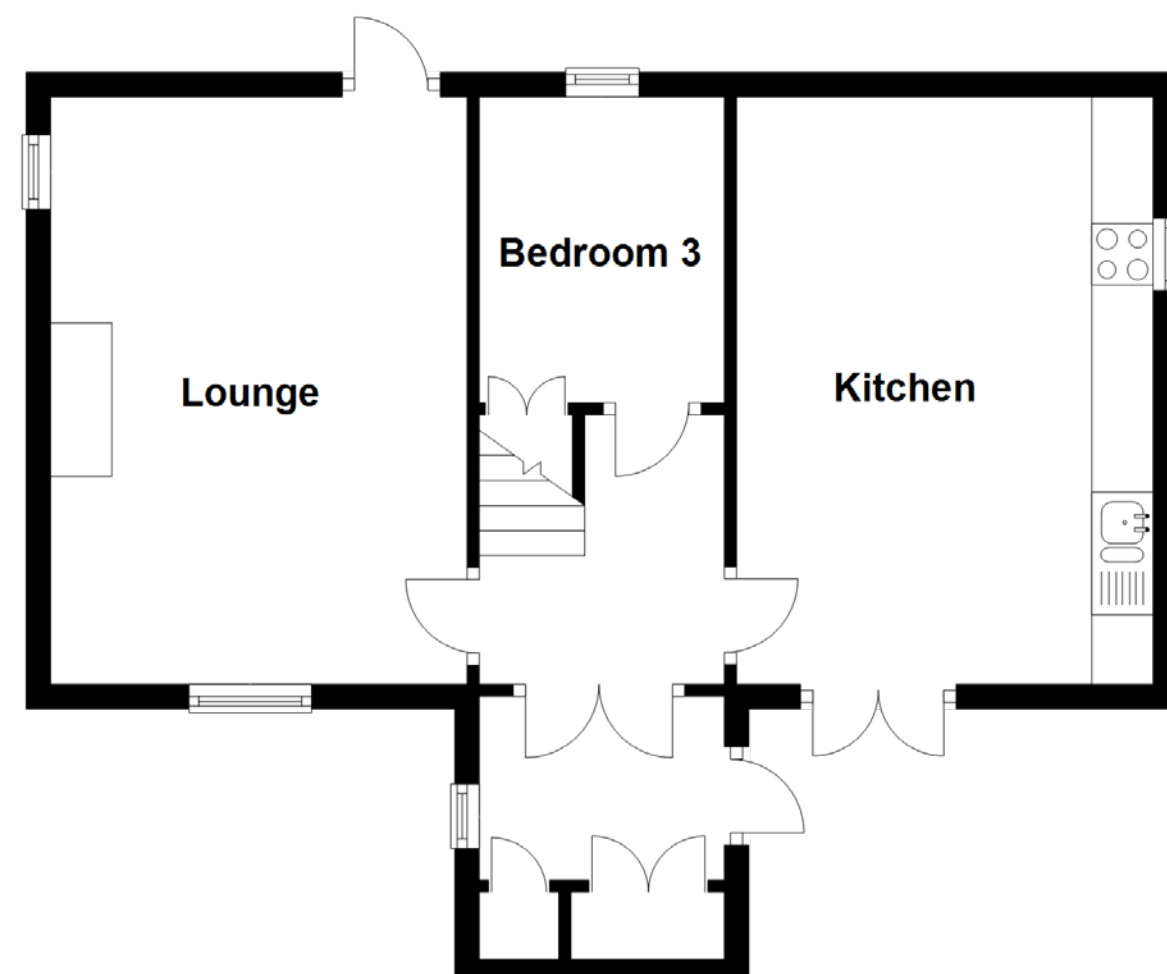


House

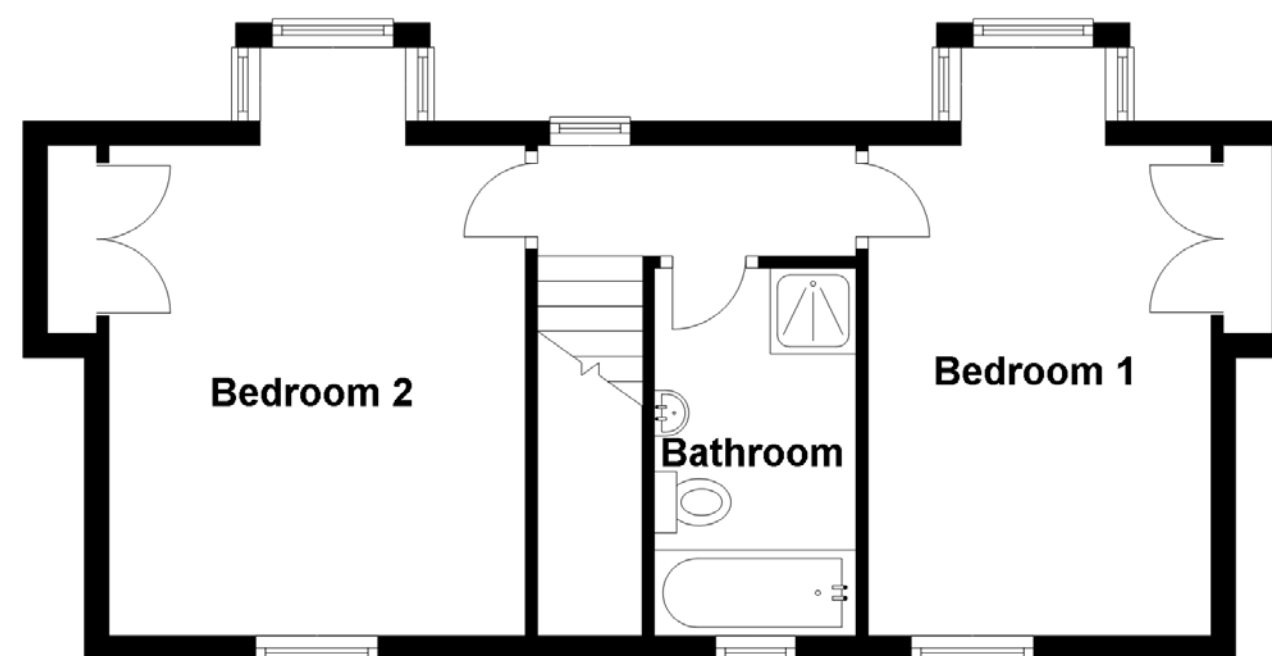


## Approximate Dimensions (Taken from the widest point)

|             |                                 |
|-------------|---------------------------------|
| Lounge      | 5.10m (16'9") x 4.90m (16'1")   |
| Kitchen     | 3.40m (11'2") x 3.00m (9'10")   |
| Dining Room | 4.90m (16'1") x 4.30m (14'1")   |
| Bedroom 1   | 4.20m (13'9") x 3.90m (12'9")   |
| Bedroom 2   | 3.90m (12'10") x 3.60m (11'10") |
| Shower Room | 2.40m (7'10") x 1.70m (5'7")    |
| Bedroom 3   | 3.90m (12'10") x 3.00m (9'10")  |
| Bedroom 4   | 3.20m (10'6") x 3.00m (9'10")   |
| WC          | 1.00m (3'3") x 0.97m (3'2")     |



Cottage



## Approximate Dimensions (Taken from the widest point)

|           |                               |
|-----------|-------------------------------|
| Lounge    | 4.80m (15'9") x 3.40m (11'2") |
| Kitchen   | 4.93m (16'2") x 3.40m (11'2") |
| Bedroom 3 | 2.50m (8'2") x 2.00m (6'7")   |
| Bedroom 1 | 4.90m (16'1") x 2.80m (9'2")  |
| Bedroom 2 | 4.90m (16'1") x 3.40m (11'2") |
| Bathroom  | 3.10m (10'2") x 1.70m (5'7")  |

**Services:** Private water supply, electricity, gas, septic tank.

**Tenure:** Freehold.

**Accounts:** Will be made available following a formal viewing or note of interest by your solicitor.