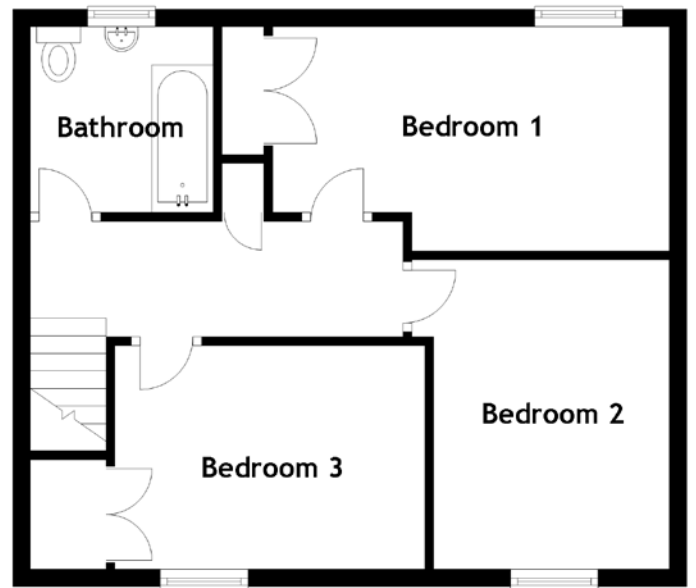
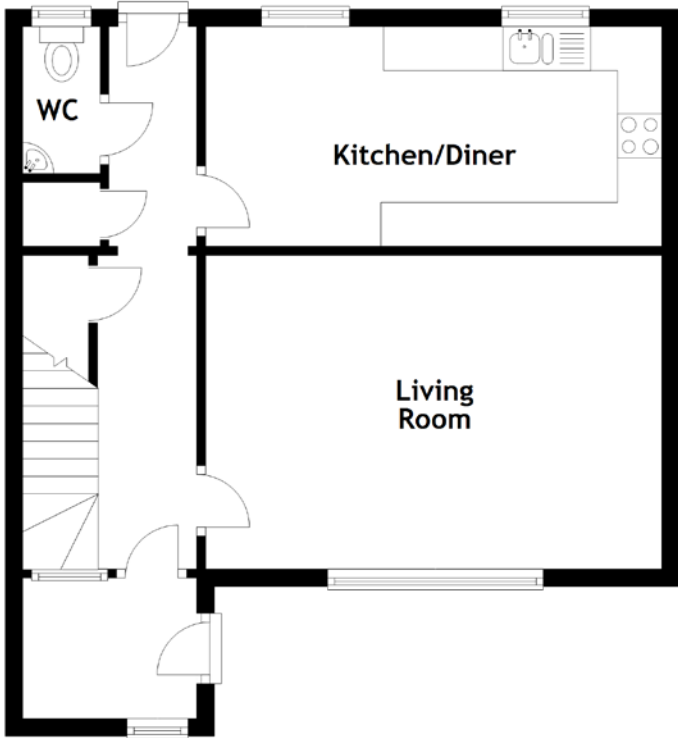


FLOOR PLAN, DIMENSIONS & MAP



Approximate Dimensions (Taken from the widest point)

Living Room	5.19m (17') x 3.57m (11'9")
Kitchen/Diner	5.16m (16'11") x 2.50m (8'2")
WC	1.67m (5'6") x 0.88m (2'11")
Bathroom	2.11m (6'11") x 2.08m (6'10")

Bedroom 1	4.51m (14'10") x 2.55m (8'4")
Bedroom 2	3.50m (11'6") x 2.93m (9'7")
Bedroom 3	3.34m (10'11") x 2.54m (8'4")

Gross internal floor area (m²): 95m²
EPC Rating: C

