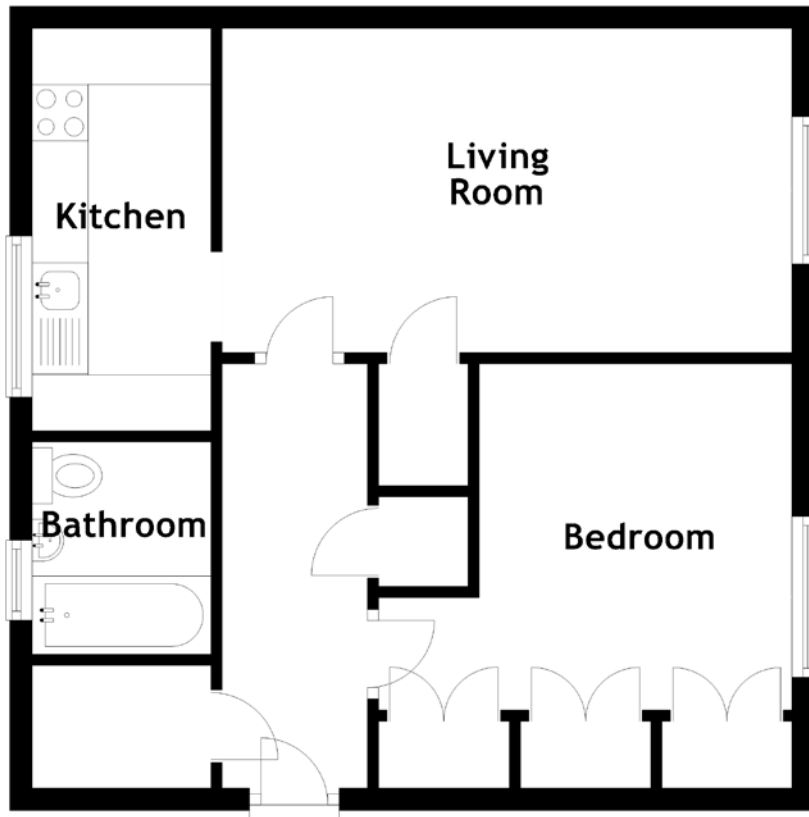


# FLOOR PLAN, DIMENSIONS & MAP



Approximate Dimensions (Taken from the widest point)

Living Room      5.10m (16'9") x 2.90m (9'6")  
Kitchen            3.60m (11'10") x 1.60m (5'3")

Bedroom            3.70m (12'2") x 3.10m (10'2")  
Bathroom          1.90m (6'3") x 1.60m (5'3")

Gross internal floor area (m<sup>2</sup>): 46m<sup>2</sup> | EPC Rating: D

