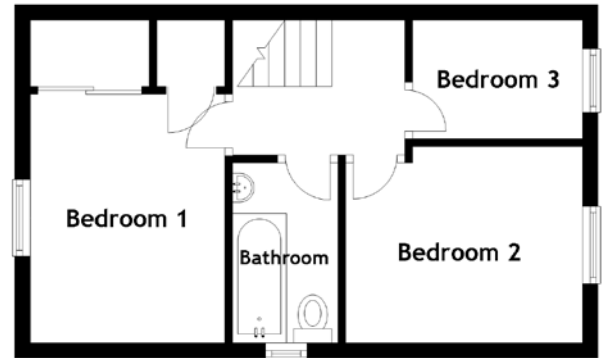
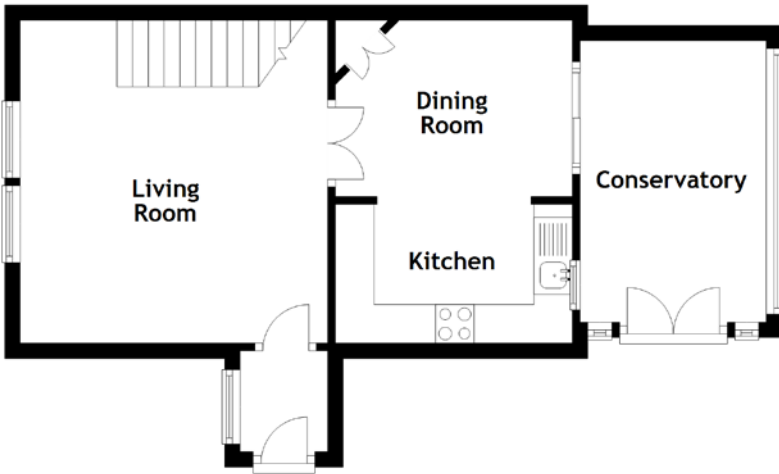


FLOOR PLAN, DIMENSIONS & MAP



Approximate Dimensions
(Taken from the widest point)

Living Room	4.19m (13'9") x 4.00m (13'1")
Dining Room	3.08m (10'1") x 2.29m (7'6")
Conservatory	3.65m (12') x 2.42m (7'11")
Kitchen	3.08m (10'1") x 1.80m (5'11")

Bedroom 1	3.20m (10'6") x 2.53m (8'4")
Bedroom 2	3.18m (10'5") x 2.55m (8'4")
Bedroom 3	2.21m (7'3") x 1.80m (5'11")
Bathroom	2.34m (7'8") x 1.35m (4'5")

Gross internal floor area (m²): 71m²
EPC Rating: C

