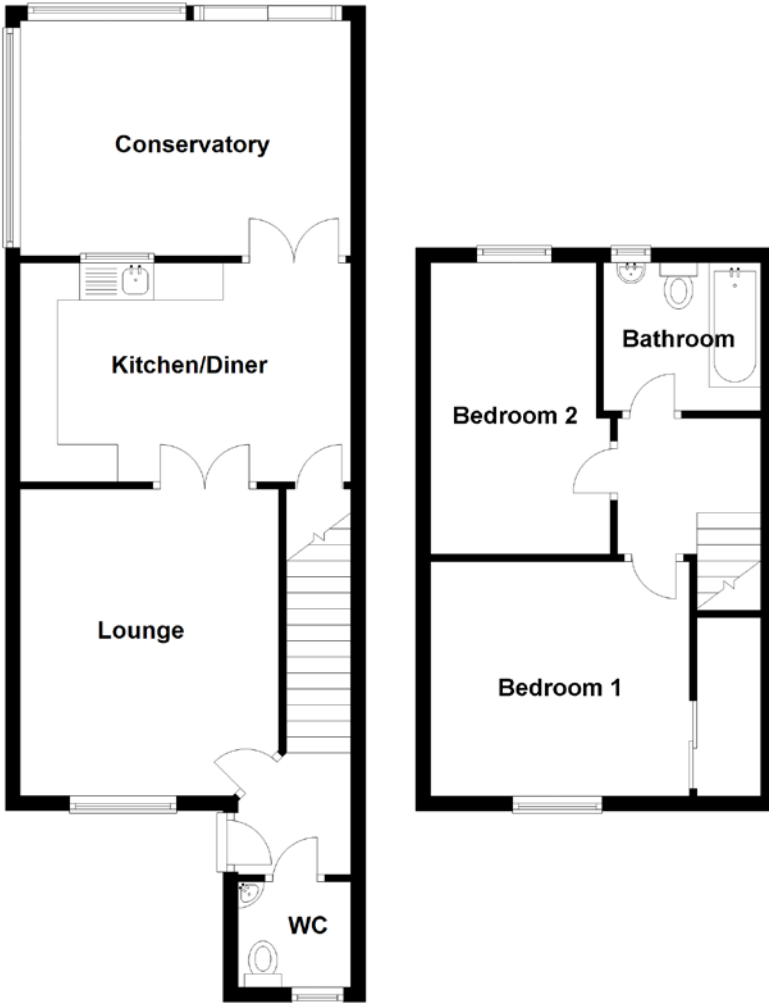


FLOOR PLAN, DIMENSIONS & MAP



Approximate Dimensions
(Taken from the widest point)

Lounge	4.14m (13'7") x 3.35m (11')
Kitchen/Diner	4.45m (14'7") x 2.95m (9'8")
Conservatory	4.30m (14'1") x 3.17m (10'5")
WC	1.52m (5') x 1.48m (4'10")
Bedroom 1	3.57m (11'9") x 3.21m (10'6")
Bedroom 2	3.93m (12'11") x 2.42m (7'11")
Bathroom	2.12m (6'11") x 2.00m (6'7")

Gross internal floor area (m²): 74m²

EPC Rating: C

