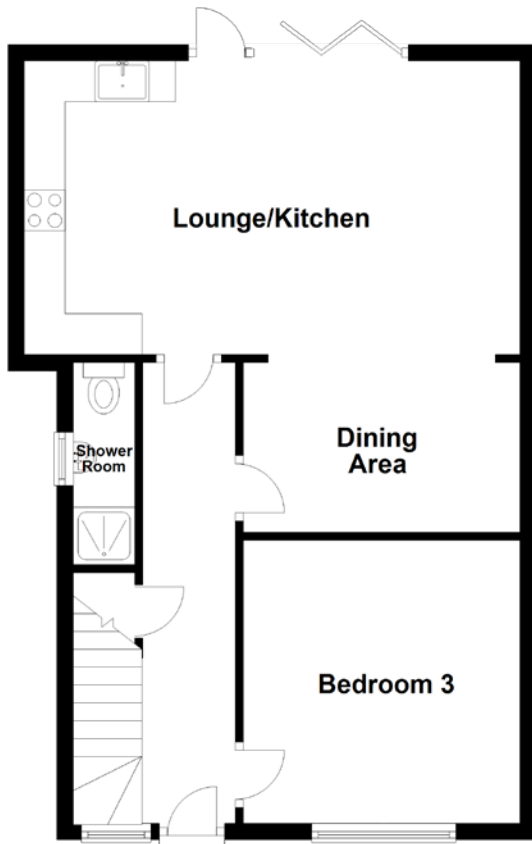


FLOOR PLAN, DIMENSIONS & MAP



Approximate Dimensions (Taken from the widest point)

Lounge/Kitchen	6.06m (19'11") x 3.59m (11'9")
Dining Area	3.38m (11'1") x 2.07m (6'9")
Shower Room	2.47m (8'1") x 0.75m (2'6")
Bedroom 1	4.50m (14'9") x 2.70m (8'10")

Bedroom 2	3.55m (11'8") x 2.95m (9'8")
Bedroom 3	3.46m (11'4") x 3.38m (11'1")
Bathroom	1.85m (6'1") x 1.70m (5'7")

Gross internal floor area (m²): 86m²
EPC Rating: D

