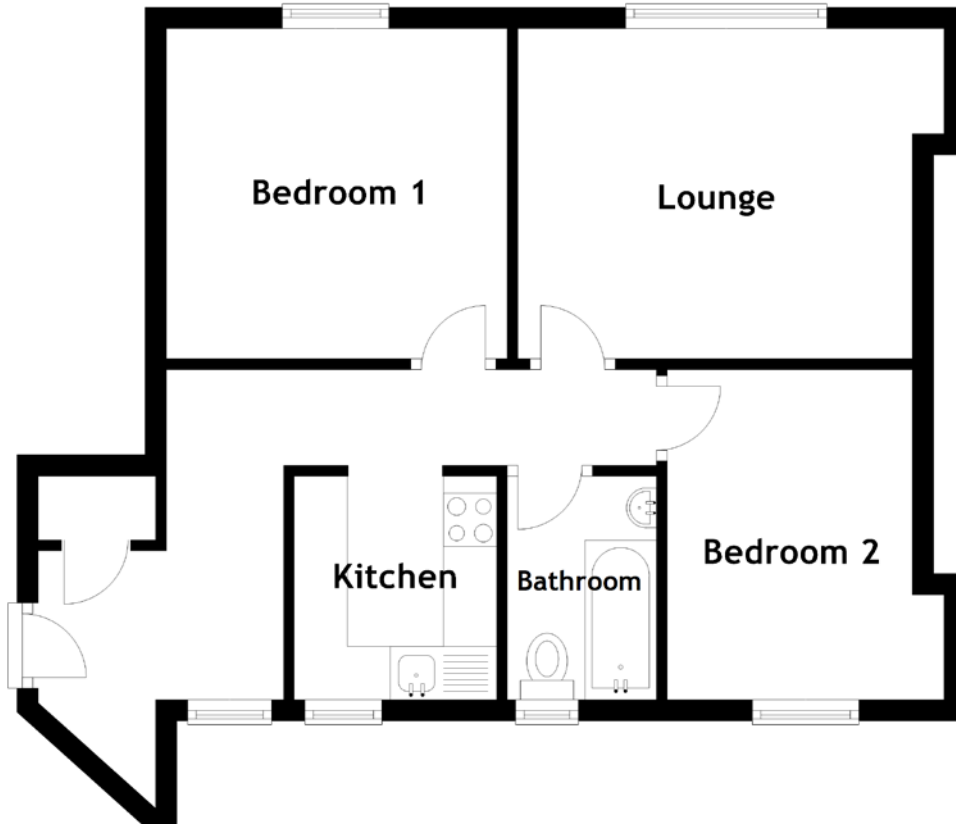


FLOOR PLAN, DIMENSIONS & MAP



Approximate Dimensions (Taken from the widest point)

Lounge 3.10m (10'2") x 2.00m (6'7")
 Kitchen 2.10m (6'11") x 1.90m (6'3")
 Bedroom 1 3.20m (10'6") x 3.10m (10'2")

Bedroom 2 3.10m (10'2") x 2.30m (7'7")
 Bathroom 2.10m (6'11") x 1.40m (4'7")

Gross internal floor area (m²): 47m²
 EPC Rating: C

