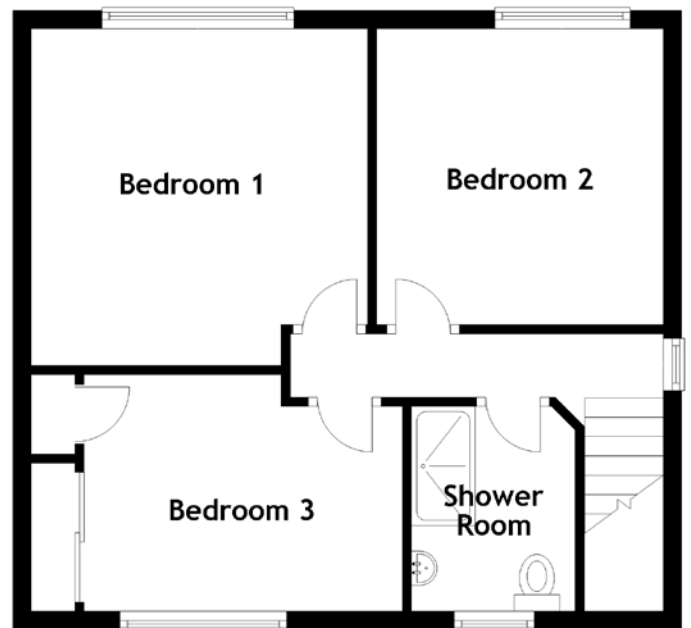
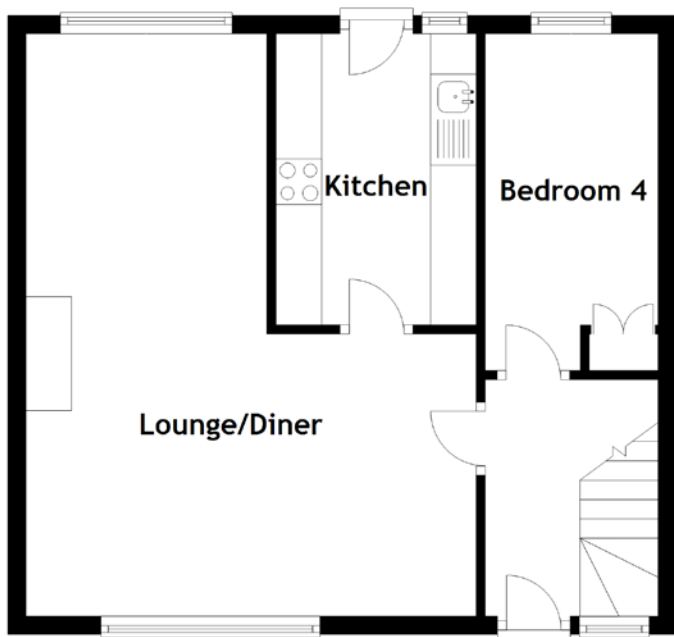


FLOOR PLAN, DIMENSIONS & MAP



Approximate Dimensions (Taken from the widest point)

| | |
|--------------|--------------------------------|
| Lounge/Diner | 9.70m (31'10") x 4.95m (16'3") |
| Kitchen | 3.20m (10'6") x 2.20m (7'3") |
| Bedroom 1 | 3.70m (12'2") x 3.70m (12'2") |
| Bedroom 2 | 3.25m (10'8") x 3.15m (10'4") |
| Bedroom 3 | 3.50m (11'6") x 2.60m (8'6") |
| Bedroom 4 | 3.70m (12'2") x 1.90m (6'3") |
| Shower Room | 2.25m (7'5") x 1.80m (5'11") |

Gross internal floor area (m²): 89m²
EPC Rating: E

Buyer's Premium Value: £2600.00

Extras (Included in the sale): Carpets and floor coverings, light fixtures and fittings, curtains and blinds.

