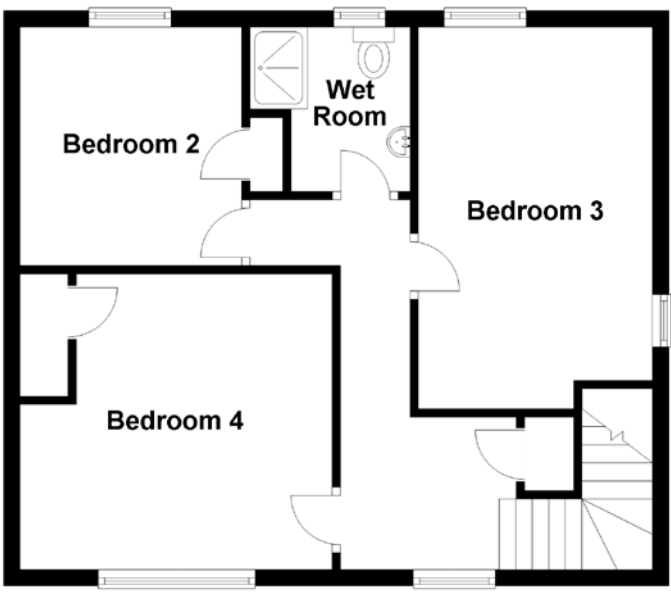
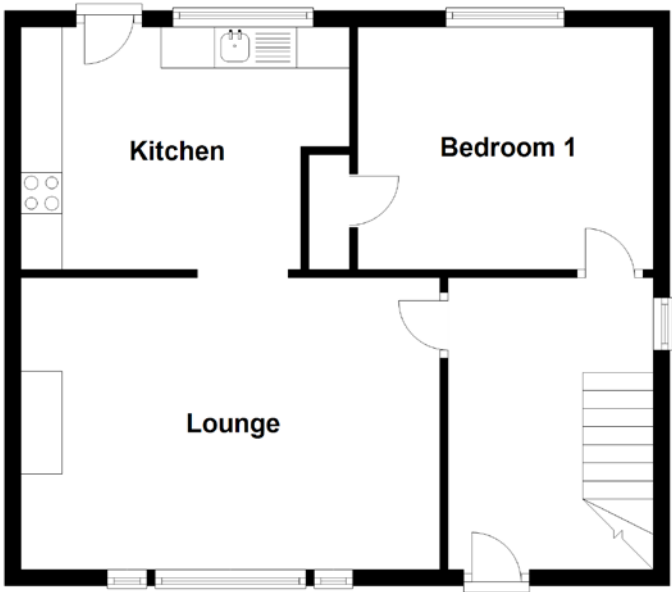


FLOOR PLAN, DIMENSIONS & MAP



Approximate Dimensions
(Taken from the widest point)

Lounge	5.10m (16'9") x 3.55m (11'8")
Kitchen	4.00m (13'1") x 2.95m (9'8")
Bedroom 1	3.60m (11'10") x 2.95m (9'8")
Bedroom 2	2.90m (9'6") x 2.70m (8'10")
Bedroom 3	4.65m (15'3") x 2.75m (9')

Bedroom 4	3.80m (12'6") x 3.60m (11'10")
Wet Room	2.00m (6'7") x 1.95m (6'5")

Gross internal floor area (m²): 102m²
EPC Rating: B

Extras (Included in the sale): Carpets and floor coverings, light fixtures and fittings, curtains and blinds. Solar panels.

