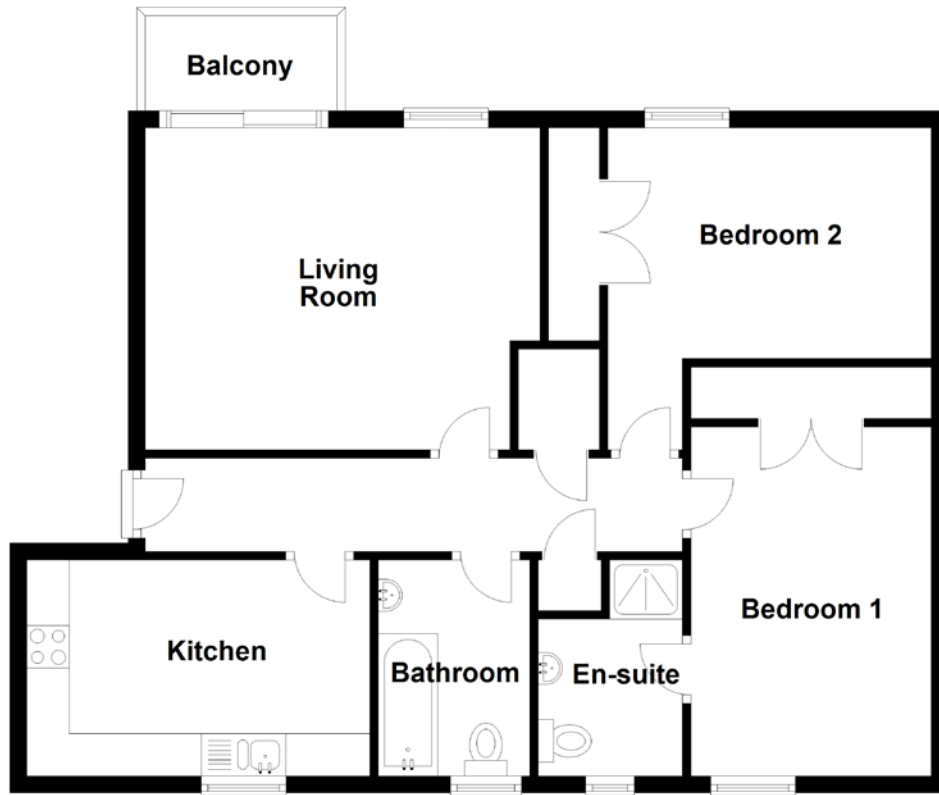


FLOOR PLAN, DIMENSIONS & MAP



Approximate Dimensions (Taken from the widest point)

Living Room	4.66m (15'3") x 3.80m (12'6")
Balcony	2.26m (7'5") x 1.22m (4')
Kitchen	4.05m (13'3") x 2.55m (8'4")
Bedroom 1	4.10m (13'5") x 2.85m (9'4")

En-suite	2.55m (8'4") x 1.70m (5'7")
Bedroom 2	3.82m (12'6") x 3.80m (12'6")
Bathroom	2.55m (8'4") x 1.79m (5'10")

Gross internal floor area (m²): 78m²
EPC Rating: C

