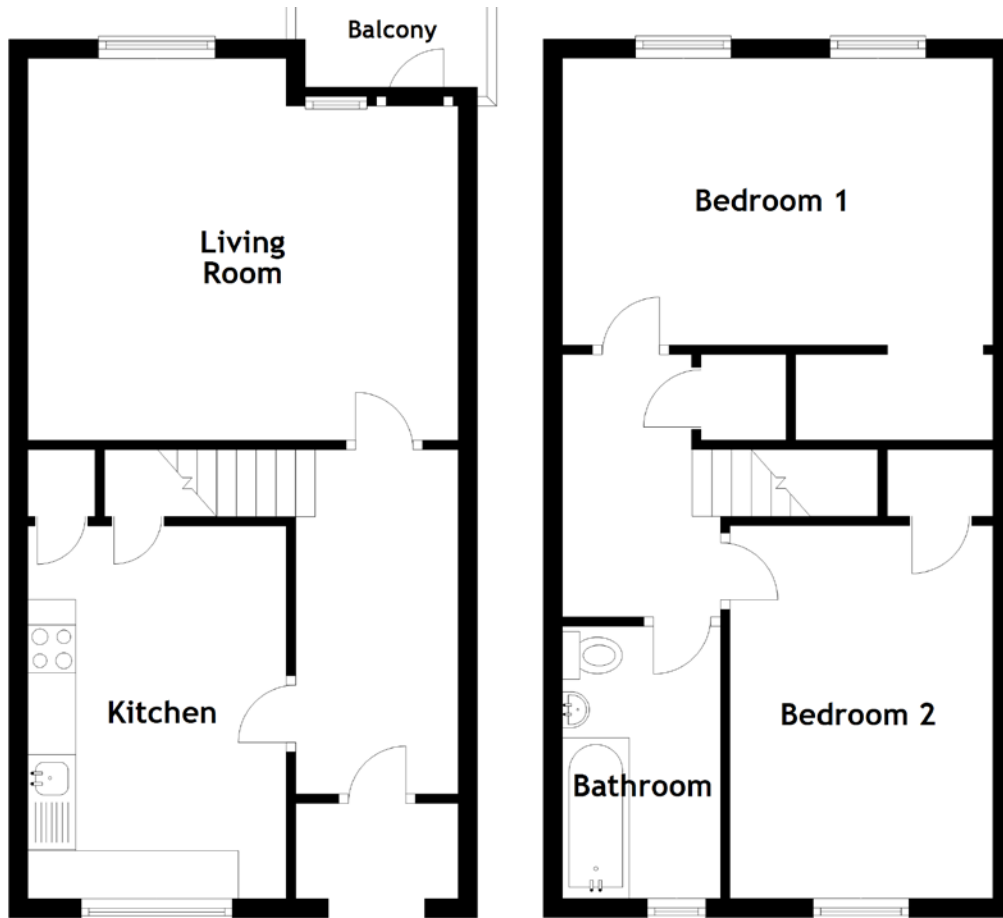


FLOOR PLAN, DIMENSIONS & MAP



Approximate Dimensions (Taken from the widest point)

Living Room 4.50m (14'9") x 4.00m (13'1")
 Kitchen 3.90m (12'10") x 2.70m (8'10")
 Balcony 2.00m (6'7") x 1.00m (3'3")

Bedroom 1 4.50m (14'9") x 3.00m (9'10")
 Bedroom 2 3.90m (12'10") x 2.75m (9')
 Bathroom 2.85m (9'4") x 1.65m (5'5")

Gross internal floor area (m²): 77m² | EPC Rating: C

