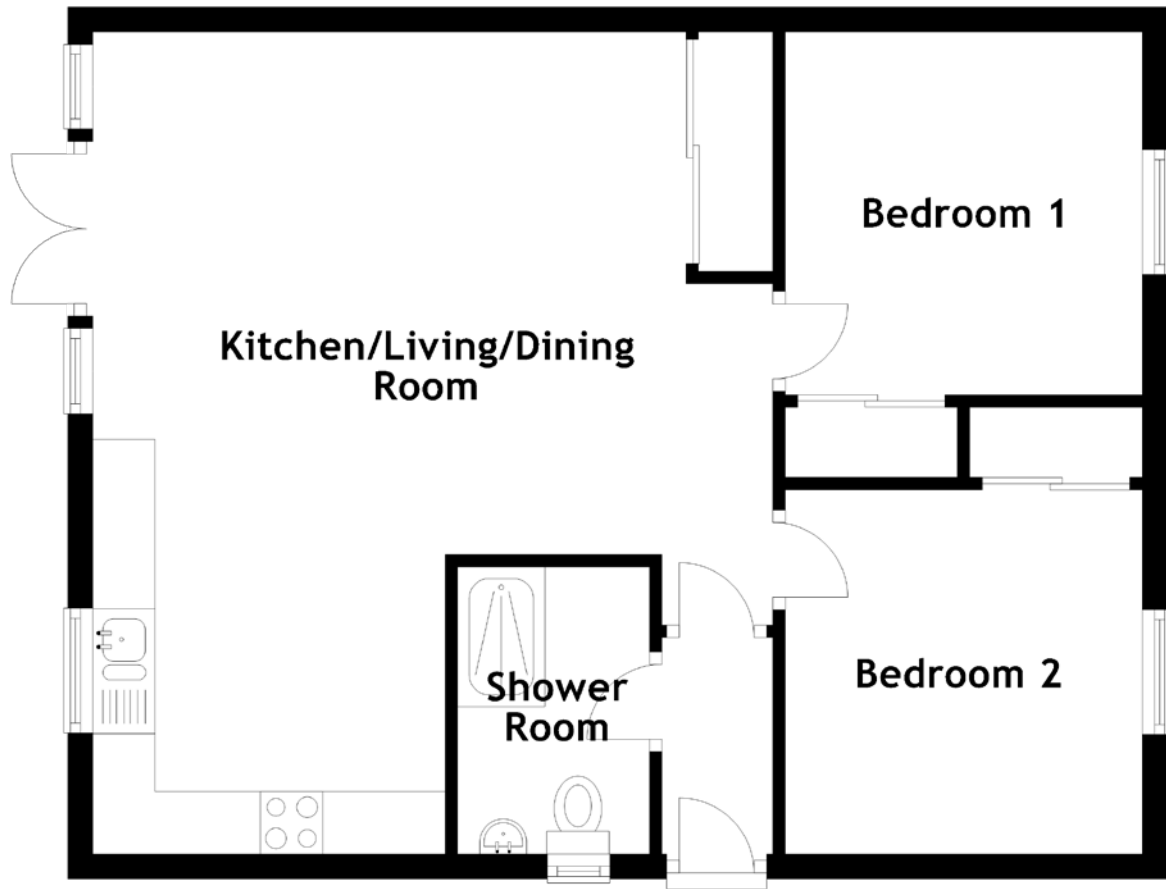


FLOOR PLAN, DIMENSIONS & MAP



Approximate Dimensions (Taken from the widest point)

Kitchen/Living/Dining Room 6.59m (21'7") x 5.45m (17'11")

Shower Room

Bedroom 1

Bedroom 2

2.30m (7'7") x 1.54m (5'1")

2.91m (9'7") x 2.86m (9'5")

2.92m (9'7") x 2.86m (9'5")

