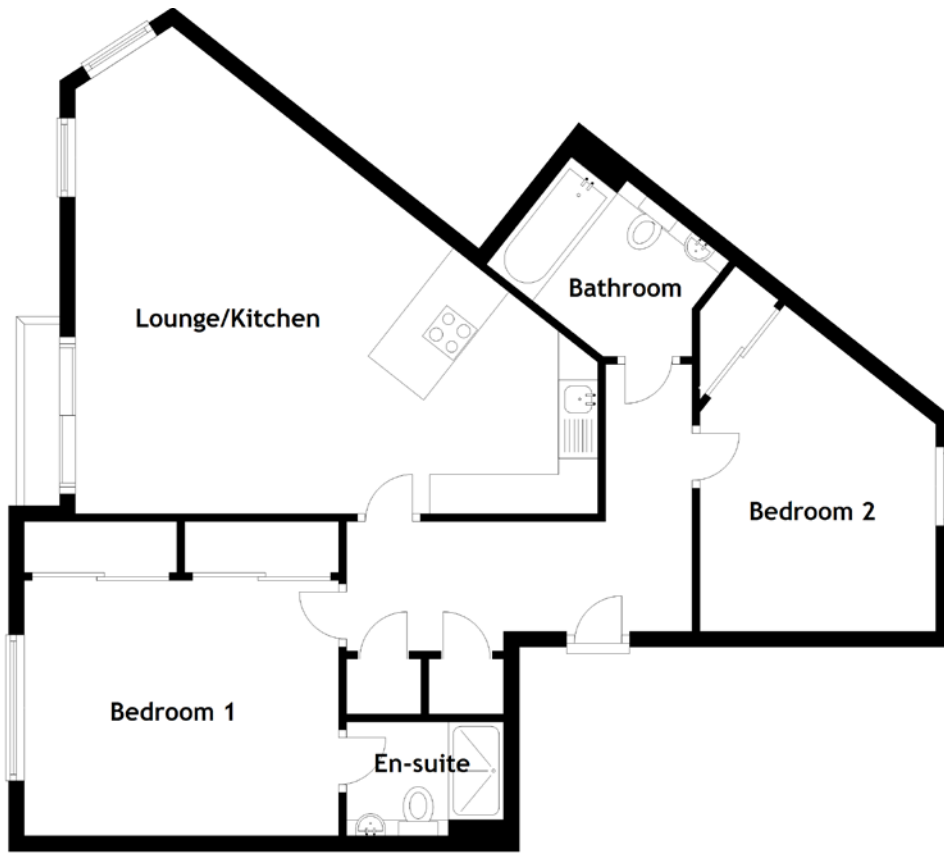


# FLOOR PLAN, DIMENSIONS & MAP



Approximate Dimensions (Taken from the widest point)

Lounge/Kitchen 7.00m (22'11") x 6.20m (20'4")  
Bedroom 1 4.00m (13'1") x 3.25m (10'8")  
En-suite 2.00m (6'7") x 1.45m (4'9")

Bedroom 2  
Bathroom

4.25m (13'11") x 3.00m (9'10")  
2.40m (7'10") x 1.95m (6'5")

Gross internal floor area (m<sup>2</sup>): 75m<sup>2</sup>  
EPC Rating: B

