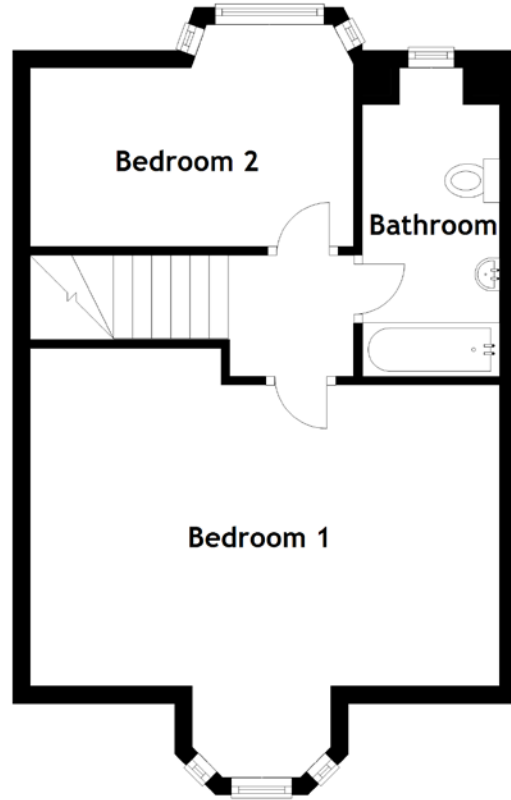
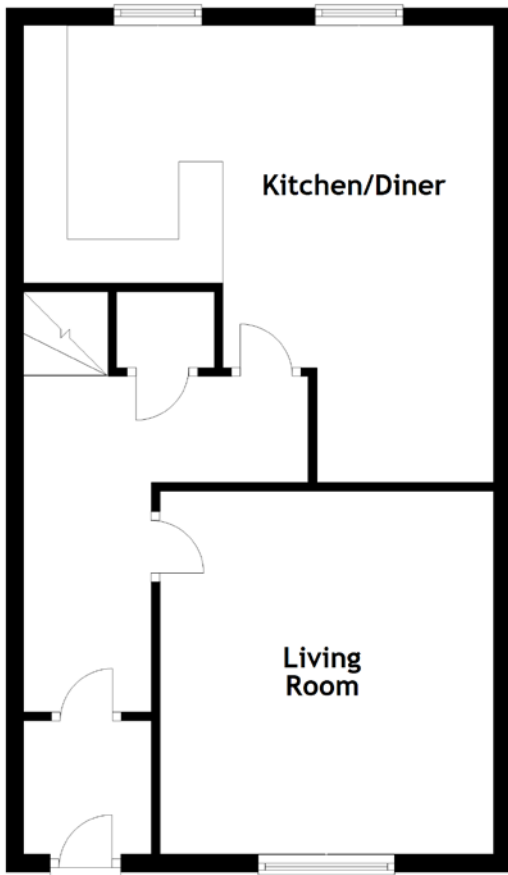


FLOOR PLAN, DIMENSIONS & MAP



Approximate Dimensions (Taken from the widest point)

Living Room 4.14m (13'7") x 3.80m (12'6")
 Kitchen/Diner 5.35m (17'7") x 5.21m (17'1")
 Bathroom 3.10m (10'2") x 1.76m (5'9")

Bedroom 1 5.68m (18'8") x 4.47m (14'8")
 Bedroom 2 3.92m (12'10") x 2.53m (8'4")

Gross internal floor area (m²): 89m²
 EPC Rating: D

