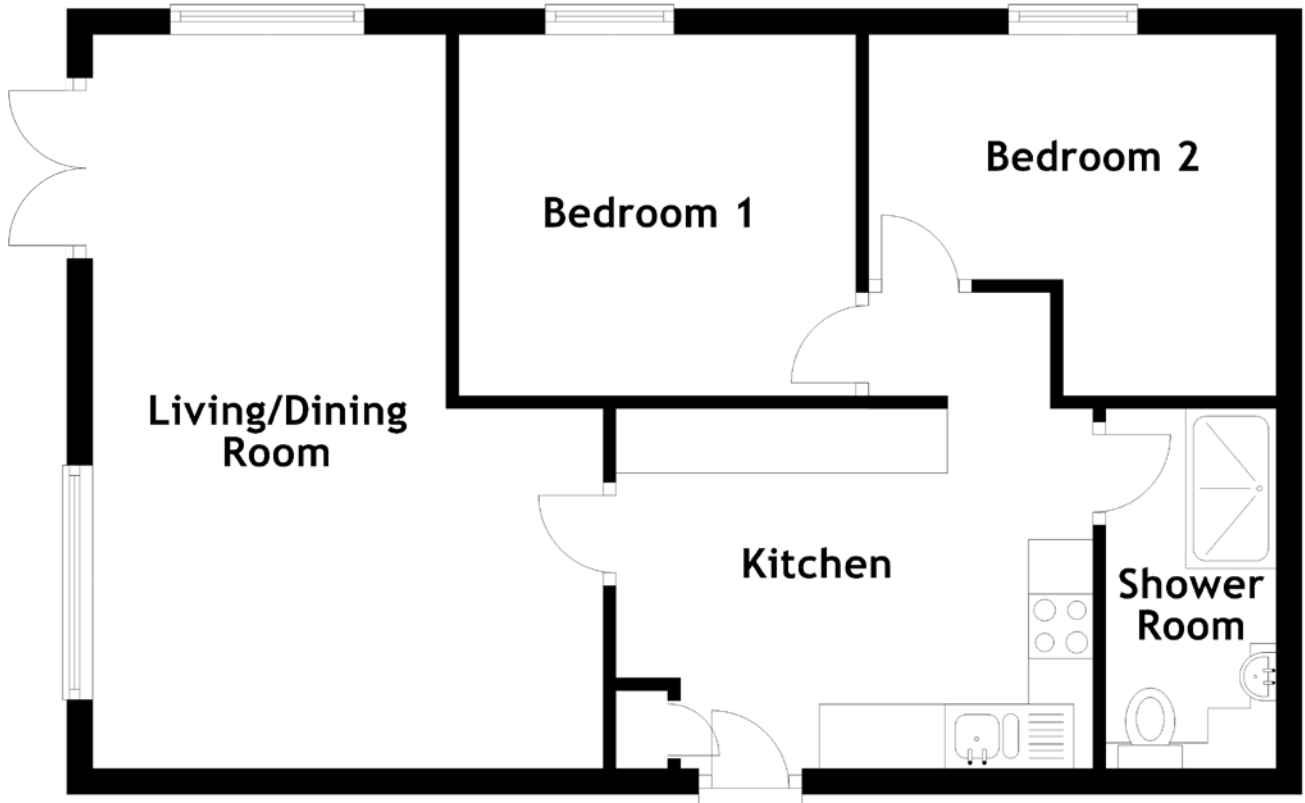


FLOOR PLAN, DIMENSIONS & MAP



Approximate Dimensions
(Taken from the widest point)

Living/Dining Room 5.71m (18'9") x 2.74m (9')

Kitchen
Shower Room
Bedroom 1
Bedroom 2

3.70m (12'2") x 2.79m (9'2")
2.79m (9'2") x 1.32m (4'4")
3.08m (10'1") x 2.80m (9'2")
3.16m (10'4") x 2.80m (9'2")

