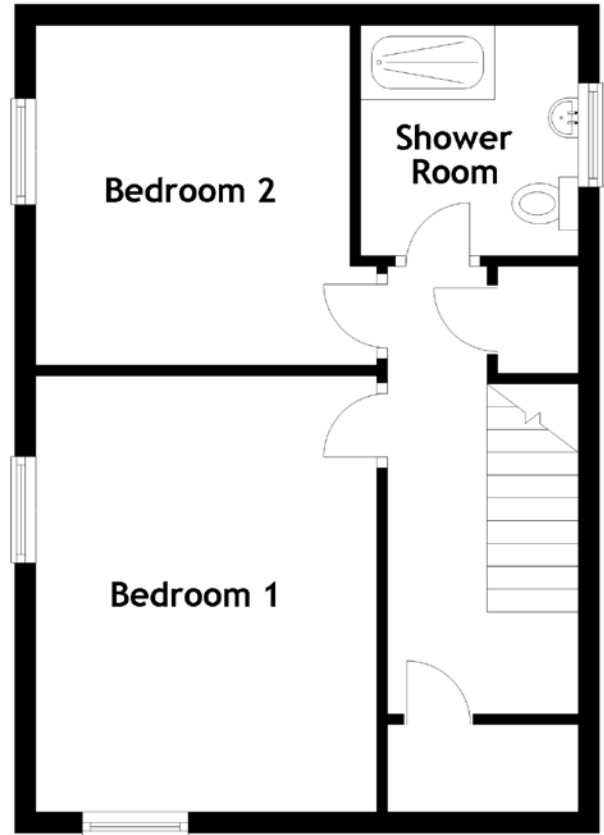
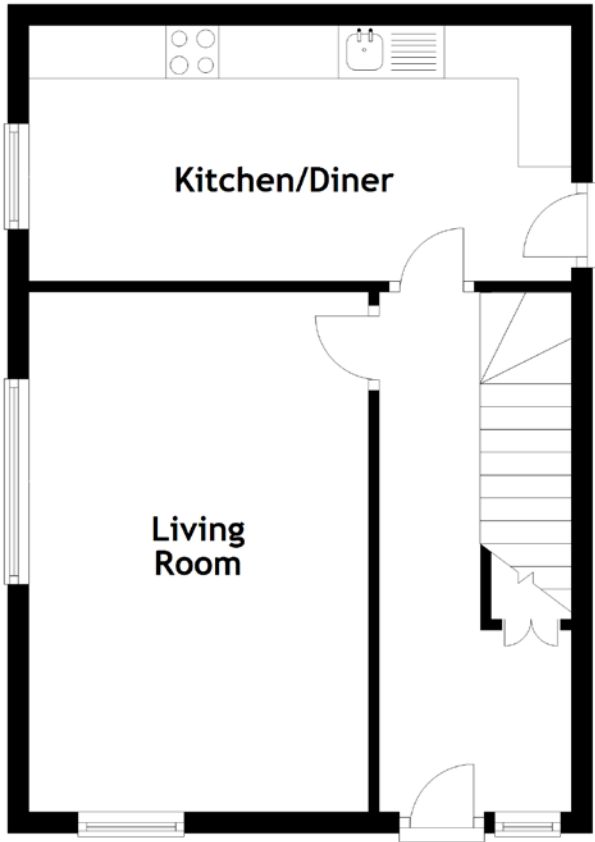


FLOOR PLAN, DIMENSIONS & MAP



Approximate Dimensions (Taken from the widest point)

Living Room 4.90m (16'1") x 3.20m (10'6")
 Kitchen/Diner 5.11m (16'9") x 2.41m (7'11")
 Shower Room 2.17m (7'1") x 1.90m (6'3")

Bedroom 1 4.07m (13'4") x 3.22m (10'7")
 Bedroom 2 3.22m (10'7") x 3.20m (10'6")

Gross internal floor area (m²): 78m²
 EPC Rating: D

