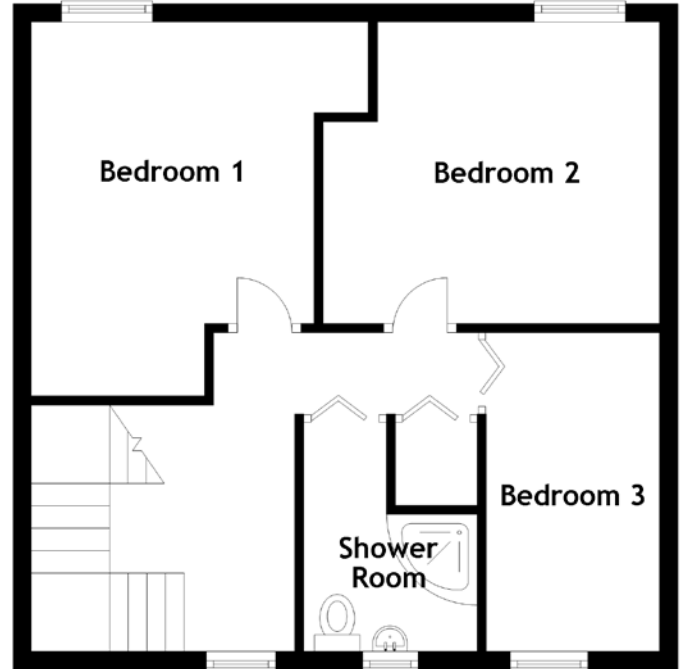
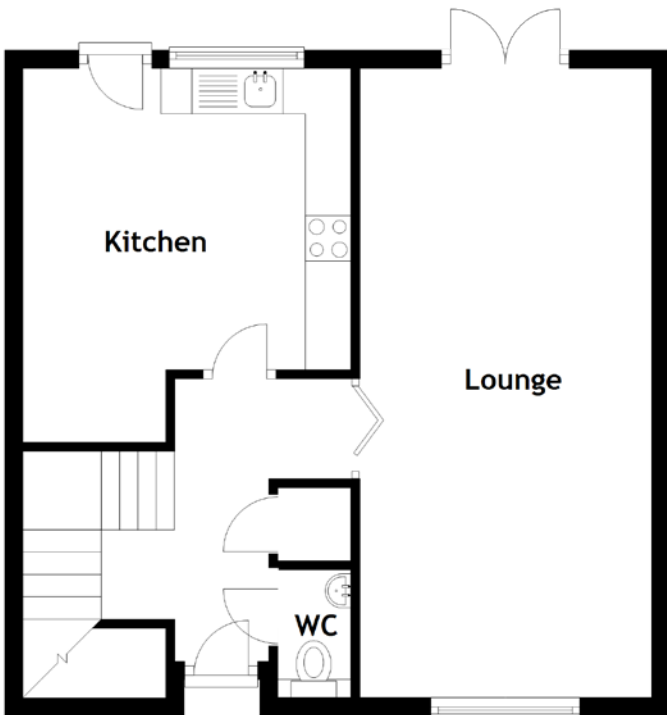


FLOOR PLAN, DIMENSIONS & MAP



Approximate Dimensions (Taken from the widest point)

Lounge	6.90m (22'8") x 3.20m (10'6")
Kitchen	4.10m (13'5") x 3.60m (11'10")
WC	1.40m (4'7") x 0.80m (2'7")
Bedroom 1	4.10m (13'5") x 2.00m (6'7")

Bedroom 2	3.70m (12'2") x 3.30m (10'10")
Bedroom 3	3.50m (11'6") x 1.90m (6'3")
Shower Room	2.50m (8'3") x 1.90m (6'3")

Gross internal floor area (m²): 96m²
EPC Rating: C

