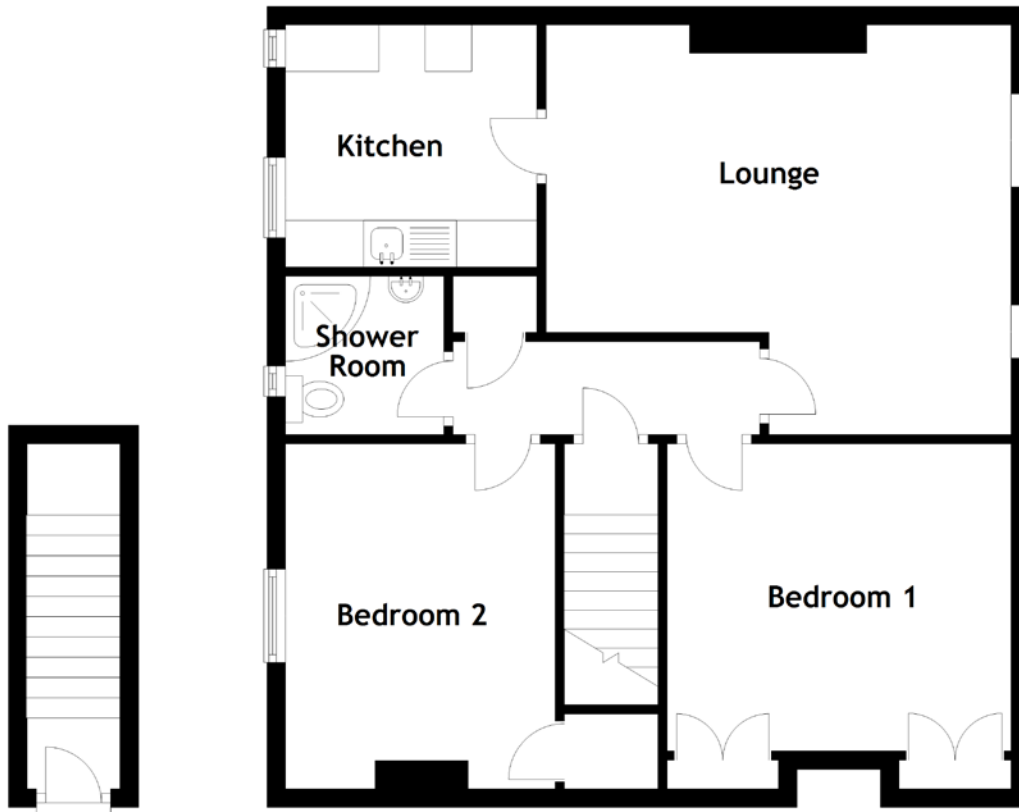


FLOOR PLAN, DIMENSIONS & MAP



Approximate Dimensions
(Taken from the widest point)

Lounge 4.30m (14'1") x 4.00m (13'1")
 Kitchen 3.60m (11'10") x 1.10m (3'7")
 Utility 1.30m (4'3") x 1.30m (4'3")

Bedroom 1 4.00m (13'1") x 3.40m (11'2")
 Bedroom 2 3.60m (11'10") x 3.50m (11'6")
 Bathroom 2.50m (8'2") x 1.70m (5'7")

Gross internal floor area (m²): 65m²
 EPC Rating: D

