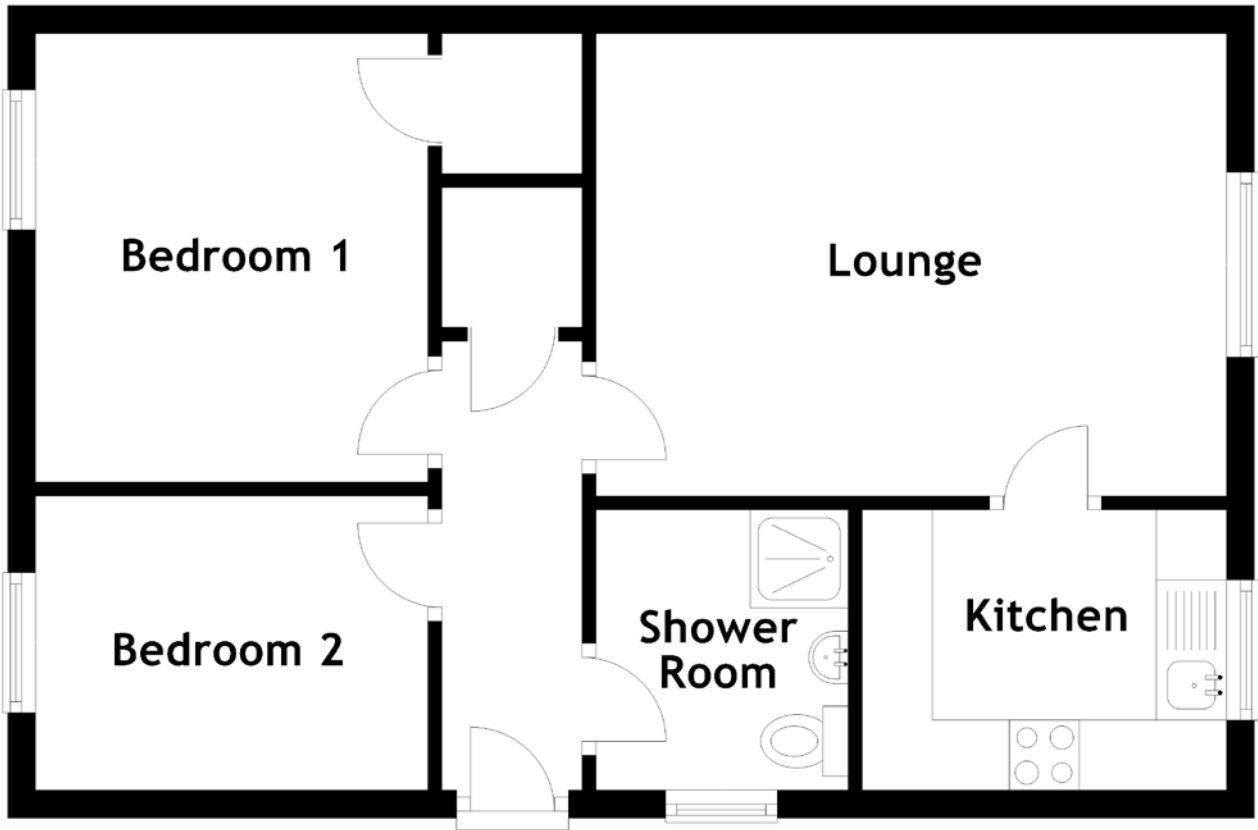


# FLOOR PLAN, DIMENSIONS & MAP



Approximate Dimensions (Taken from the widest point)

Lounge 4.50m (14'9") x 3.30m (10'10")  
 Kitchen 2.60m (8'6") x 2.00m (6'7")  
 Shower Room 2.00m (6'7") x 1.80m (5'11")

Bedroom 1 3.20m (10'6") x 2.80m (9'2")  
 Bedroom 2 2.80m (9'2") x 2.10m (6'11")

Gross internal floor area (m<sup>2</sup>): 46m<sup>2</sup>  
 EPC Rating: D

